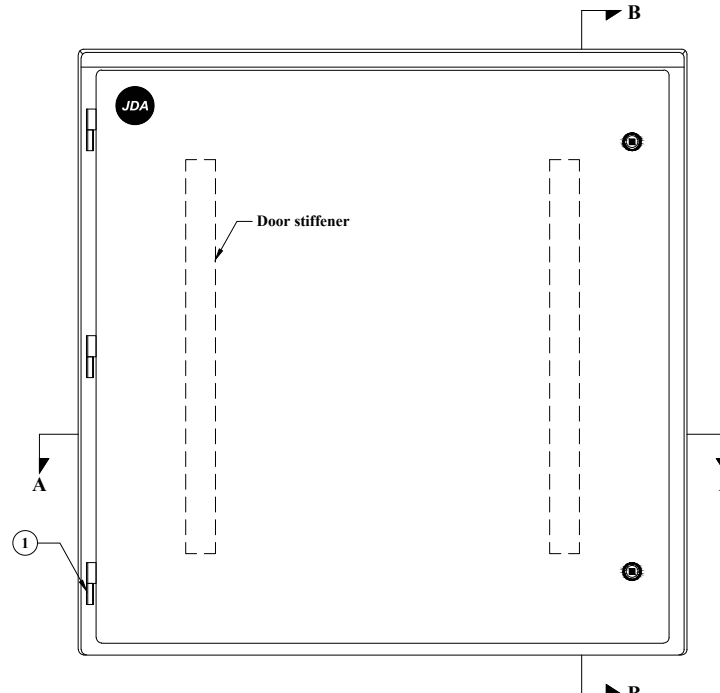
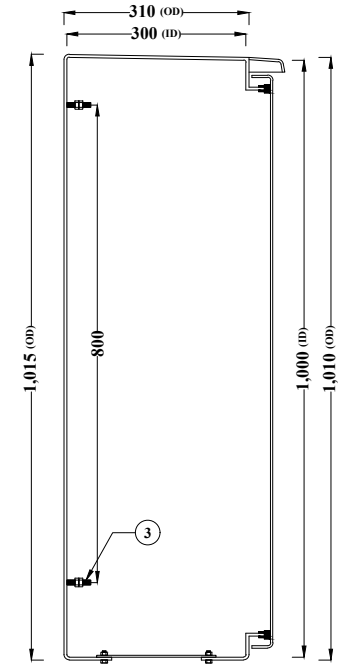


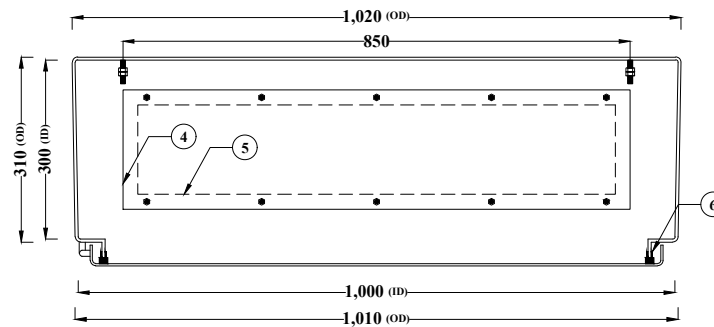
LEFT SIDE ELEVATION



FRONT ELEVATION



SECTION B B



SECTION A A

Special note: SUS304 or SUS316 for all metal accessories on request

BILL OF MATERIALS				
ITEM	DESCRIPTION	MATERIAL	DIMENSION	QTY
1	Lift off hinges	Aluminium alloy	-	3
2	Square key lock	Zinc alloy	-	2
3	Mounting stud	Galvanized Iron	M8 x 40	4
4	Gland plate	Galvanized Iron	850L x 200W x 2.8thk	1
5	Gland plate cutout	-	800L x 150W	1
6	Gasket	EPDM & PVC	-	-
7	Small canopy	GRP	-	1

1. FEATURES & MATERIAL:

- a. Product material: Glass Reinforced Polyester.
- b. Hardware: Galvanized Iron.
- c. Ingress Protection: IP 65, BS EN 60529:1992 Certified.
- d. UV Resistant: ASTM G154 Certified.
- e. Fire Retardant and Self Extinguishing: BS 476:Part 7:1997 Class 2 Certified.

2. SURFACE FINISH:

- a. External finish: Plain semi gloss UV resistant grey color gelcoat finish to RAL 7035.
- b. Internal finish: Reasonable smooth flow coated finish to grey color.

3. DIMENSIONAL NOTES:

- a. Wall thickness: 4mm generally & 6mm at stress points.
- b. Tolerance: ±10mm.
- c. ID - Inner Dimension, OD - Outer Dimension.

REVISION	DRAWN	CHECKED	DATE	DESCRIPTION



日陽國際事業股份有限公司
JD Auspice Co., Ltd.

www.jdauspice.com

PROJECT CLIENT(S): JD AUSPICE COMPANY LIMITED

PROJECT NAME: GRP Enclosure

SHEET TITLE: GRP SINGLE DOOR ENCLOSURES

INTERNAL SIZE: 1000 (H) x 1000 (W) x 300 (D)

DRAWN BY: G.S

APPROVED BY: K.A

DATE: 24/05/2023

SCALE: NTS

DOCUMENT ID: GRPSD100100030KA43455R0 GS 0745

SHEET NO: 1/1

UNIT: mm.