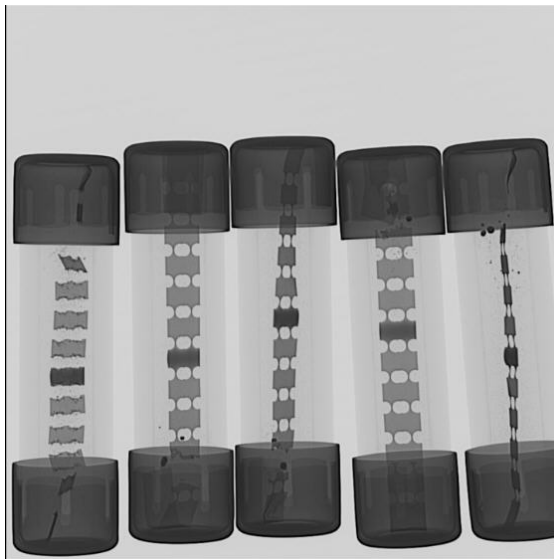


IEC60269-6_2xIsc vs IEC62548 gPV fuse_2.4xIsc
有關匯流箱過熱導致太陽能保險絲非故障斷損



See below reply

IEC60269-6 only gives the following guidance for selection of the correct rated current in Appendix BB:

見下面的回覆IEC60269-6僅在附錄BB中為選擇正確的額定電流提供以下指導：

BB.3 Current carrying capability

BB.3.1 Rated current

The rated current of the fuse-link selected shall take into account I_{sc} at the ambient temperature, and the cycling load.

For example: at 45 °C and a peak of radiation of 1 200 Wm⁻², the fuse-link rated current shall be $\geq 1,4 \times I_{sc}$.

Contact fuse manufacturer for additional de-ratings caused by higher ambient temperature or by multiple fuses arranged in a enclosure.

There is no upper limit specified for the rated current.

in addition the IEC62548 “Design Requirements for Photovoltaic (PV) Arrays” gives the following selection rules:

沒有為額定電流指定上限。另外，IEC62548 “光伏（PV）陣列的設計要求” 給出了以下選擇規則：

6.3.5 Overcurrent protection sizing

6.3.5.1 PV string overcurrent protection

Where string overcurrent protection is required, either:

1. each PV string shall be protected with an overcurrent protection device, where the nominal overcurrent protection rating of the string overcurrent protection device shall be I_n where:

$$I_n > 1,5 \times I_{sc_MOD} \text{ and } I_n < 2,4 \times I_{sc_MOD}$$

$$I_n \leq I_{MOD_MAX_OCPR}$$

For instance, there you'll find the marked upper limit, with an I_{sc} of 8.8A it is max. 21.12A, therefore 20A rated current is still OK.

例如，您會找到標記的上限， I_{sc} 為8.8A，這是最大值。21.12A，因此20A額定電流仍然可以。

Please note that all this is only given as advise. We are not going to be responsible for any problems that may arise. So please don't say we told you to use 20A fuse. It is customer own responsibility in the end to take whatever decision that they want on their own equipment.

請注意，所有這些僅作為建議。我們將不對可能出現的任何問題負責。因此，請不要說我們告訴過您使用20A保險絲。最終，客戶有責任對自己的設備做出任何決定。

IEC60269-6 norms stated $2 \cdot I_{sc}$ (can accept tolerance $\pm 10\%$)

IEC62548 $I_n < I_{MOD_MAX_OCPR}$

IEC60269-6規範規定為 $2 \cdot I_{sc}$ （可以接受公差 $\pm 10\%$ ）IEC62548輸入 $< I_{MOD_MAX_OCPR}$

日煬分享

Thank you