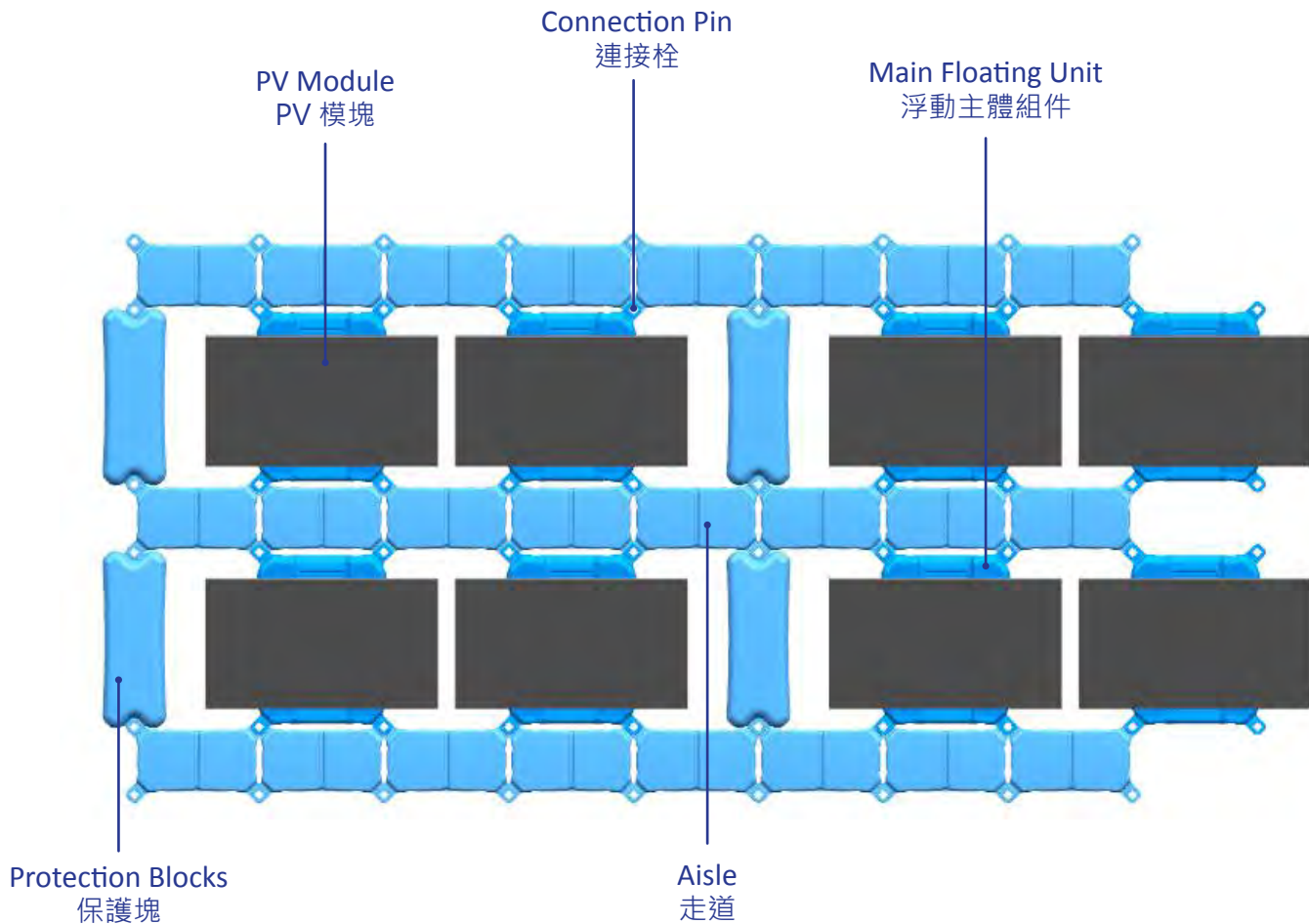


# Floating PV mounting system

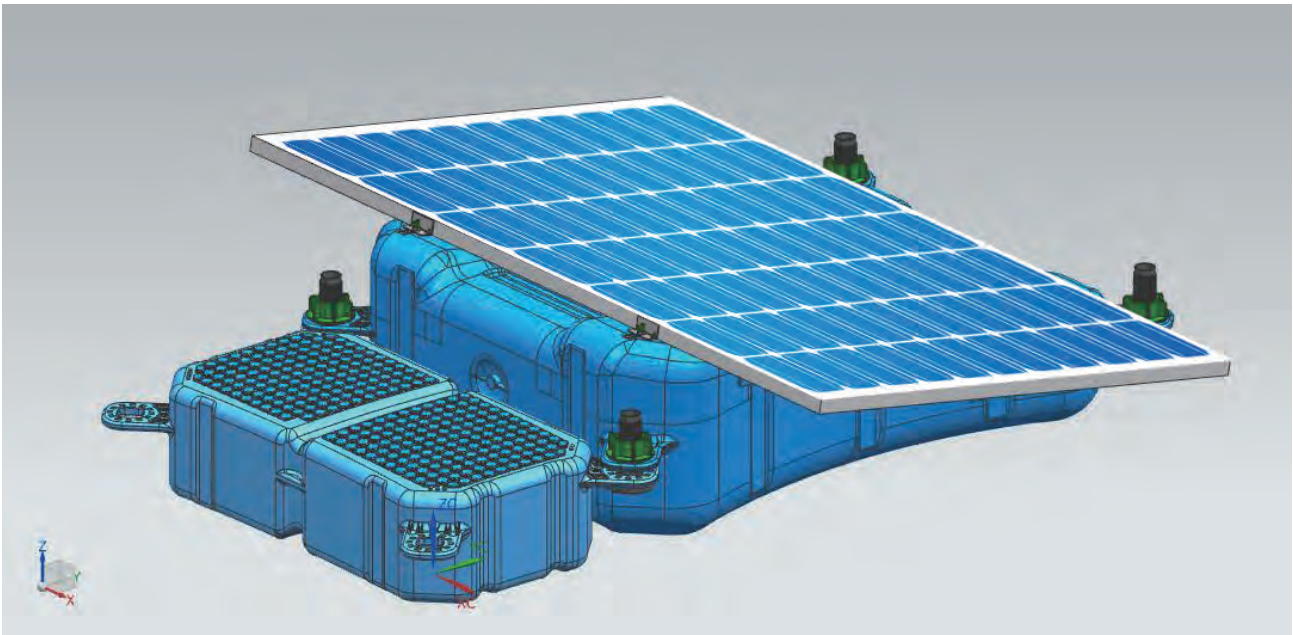


## Product Advantages

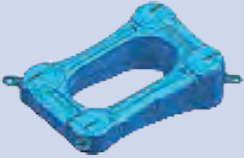



- No pollution
- Can be recycled
- High cost-effective
- Low maintenance cost
- Fast and convenient assembly
- Module dimension Compatible
- Excellent weather resistance

## Technical Feature

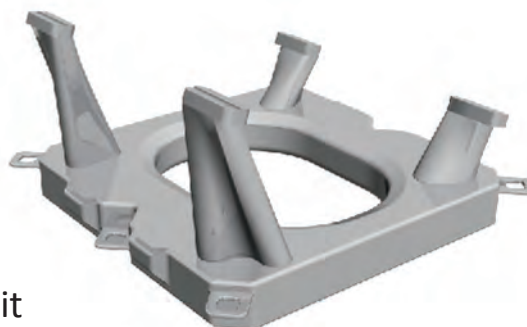
- Nodular design, good scalability
- Flexible system configuration
- Different anchorage forms
- Comprehensive security
- Good anti-wave ability
- Good overall stability
- Color customized
- Protection



- The design of anchoring system should consider: the water level variation, water depth, water velocity, ground and other.  
錨固系統的設計應考慮：水位變化、水深、水速、地面等。
- Dimensions of the solar island.  
太陽能島的尺寸。
- Wind speed, wind direction.  
風速、風向。
- Detailed map of the reservoir.  
水庫的詳細地圖。
- Bathymetric map of the reservoir, the bottom shape, water velocity and depth.  
水庫的水深圖、底部形狀、水速和水深。

主浮箱體		10 kg 1300 × 900 × 390
過道箱體		6.5 kg 880 × 480 × 230
檢修過道箱體		7 kg 1300 × 480 × 230
五金配件		角度23.5° 可以依照需要做高度 / 角度 2套 / 種

- The floPV<sup>®</sup> body to provide buoyancy to the PV module combiner box pvBos<sup>®</sup>, etc.  
floPV<sup>®</sup>為PV模塊匯流箱等提供浮力。



- The floPV<sup>®</sup> body is a single solid, so can avoid the force caused by the wave to transmit to the PV modules.

floPV<sup>®</sup>是獨立主體，因此可避免波浪傳遞到PV模塊所產生的阻力。



Material 材料	High density polyethylene(HDPE), in accordance with the Hunt water absorption test (CN), including anti aging, anti ultraviolet, etc.
Wall thickness 壁厚(mm)	4~5
Weight 重量(kg)	11 kg
Dimension 尺寸	L×W×H (mm) 1000×1000×150
Process 處理	Blow Molding
Tilt angle 傾斜角	15°
Advantage 優點	The diagonal connecting lug of the main floating body can bear the pulling force far super domestic and foreign similar products 2000daN*, ensure no deformation and fracture. *Breaking strain 2000 daN = 20 kN = approx 2000 kg
Environmental test report 環境試驗報告	Qualification

## Aisle and protection blocks

- Convenience for the subsequent operation and maintenance, at the same time tightly connected to the main floating body, ensure the stability of the entire PV island station.  
便於後續操作和維護，同時緊密連接主體浮台，確保整個光伏電站的穩定性。
- With non slip texture, to further protect the customers safety.  
具有防滑紋理，進一步保護客戶的安全。



<b>Material</b> 材料	High density polyethylene(HDPE), in accordance with the Hunt water absorption test (CN), including anti aging, anti ultraviolet, etc.
<b>Wall thickness</b> 壁厚(mm)	4~5
<b>Weight</b> 重量(kg)	6 kg
<b>Dimension</b> 尺寸	L×W×H (mm) 1000×1750(or250)×150
<b>Process</b> 處理	Blow Molding
<b>Function</b> 功能	Ensure that modules no shadows and the aisle with anti slip texture.