

# CH 10 gPV - Fuse-links

## General characteristics

UL file: E347771

Rated voltage	1000V d.c. L/R=2ms
Breaking capacity	30kA d.c.
Standards	IEC 60269-6 ed 1.0 (2010-9)
Application	For protection of photovoltaic modules.



Standard Contacts

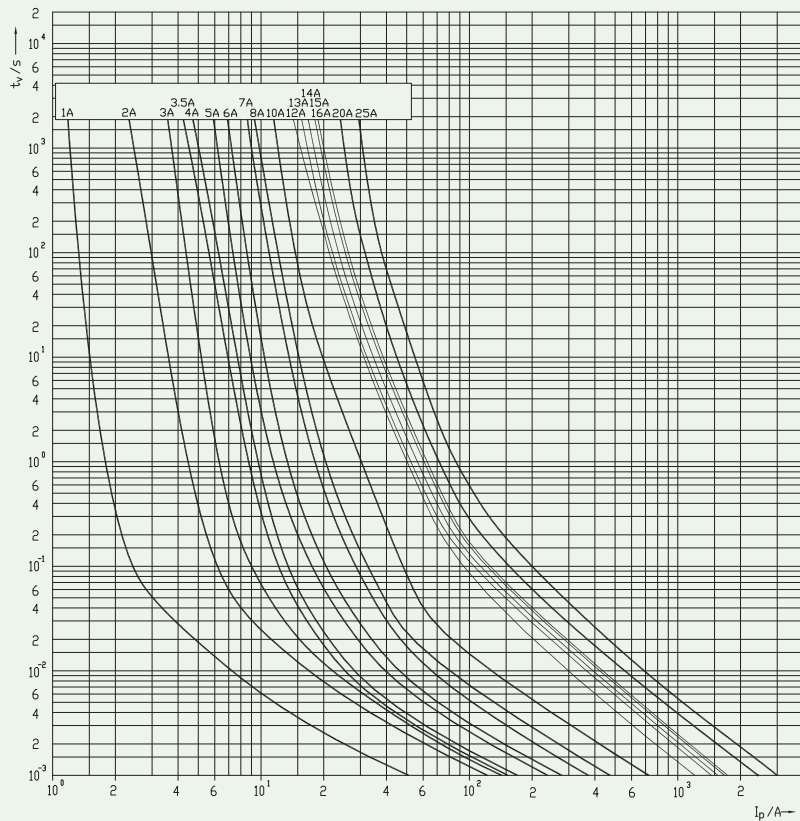


Type SU Contacts

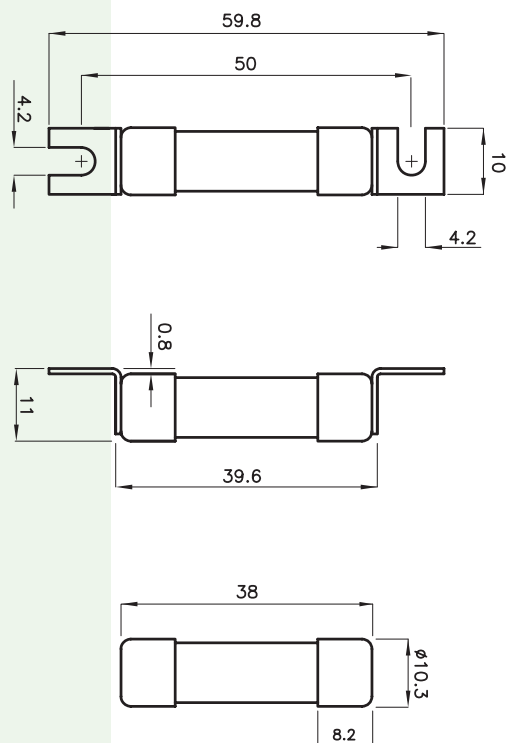
## CH 10 gPV

Size	$I_n$ [A]	Code No. "standard contacts"	Code No. "type SU contacts"	Pre-arcing Joule integral [A <sup>2</sup> s] L/R=2ms	Operating Joule integral [A <sup>2</sup> s] L/R=2ms	Power dissipation [0,7 x I <sub>n</sub> ] P <sub>d</sub> [W]	Power dissipation [I <sub>n</sub> ] P <sub>d</sub> [W]	Weight [g]	Packaging [pcs]
10 x 38	1	002625138	002625129	0,8	2,5	0,4	1	10/12	10/500 SU:10/380
	2	002625101	002625115	1,3	3,5	0,52	1,25		
	3	002625100	002625113	2,6	7,5	0,55	1,3		
	3,5	002625135	002625127	3	9,5	0,48	1,16		
	4	002625102	002625116	4	13	0,52	1,25		
	5	002625111	002625124	7,4	23	0,63	1,49		
	6	002625103	002625117	10	45	0,73	1,65		
	7	002625110	002625114	13	57	0,79	1,92		
	8	002625104	002625118	17	62	0,84	2		
	10	002625105	002625119	21	88	0,97	2,3		
	12	002625106	002625120	28	110	0,95	2,2		
	13	002625137	002625128	30	160	1	2,3		
	14	002625136	002625126	31	180	1,1	2,5		
	15	002625112	002625125	33	260	1	2,4		
	16	002625107	002625121	35	270	1,1	2,6		
	20	002625108	002625122	50	430	1,3	3		
	25*	002625109	002625123	75	620	1,6	4		

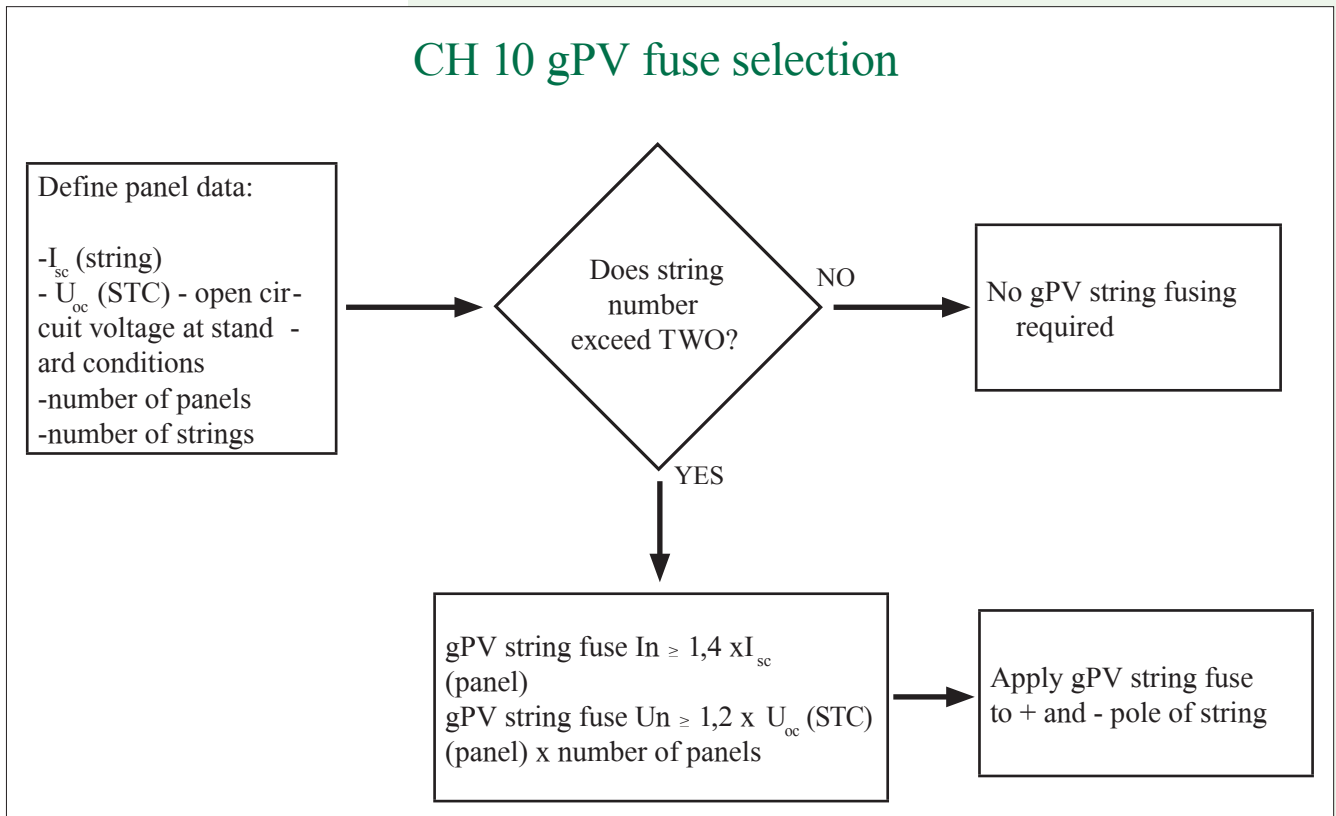
\* 900V d.c.



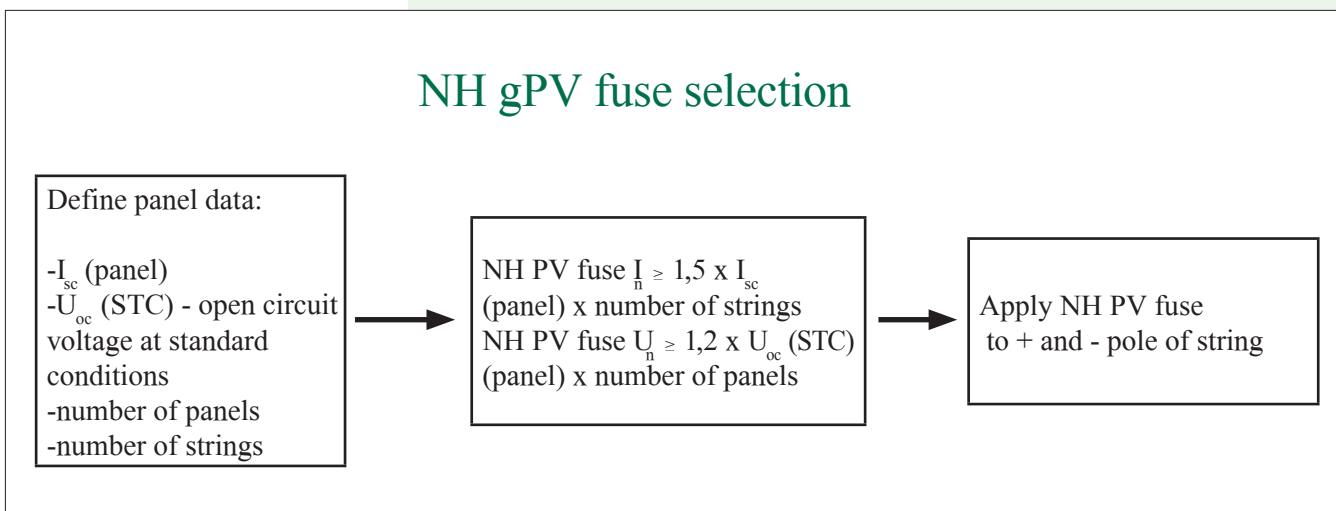
CH 10 gPV I/t characteristics



## CH 10 gPV fuse selection



## NH gPV fuse selection



ETI as one of the most important European producer of overcurrent protection equipment and devices participating in many working groups for standards development at International Electrotechnical Commission (IEC). ETI is member of maintenance team MT9 belonging to the 32B group, working on the part 6 of the IEC 60269 dealing with supplementary requirements for fuse-links for the overcurrent protection of solar photovoltaic energy systems.