



JDA BOX

IP 65/66/67
Enclosure catalogue



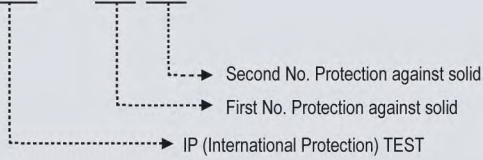
I D E X

JDA box Ingress Protection Grade	Page 3
JDA box Material	Page 4
Characteristics of JDA box plastic enclosure	Page 5
How to choose JDA box's products	Page 06-09
P Series	Page 10-11
H Series – Medium and large size	Page 12-13
H Series – Medium size	Page 14-15
H Series – Small size	Page 16-17
S Series – Medium size	Page 18-19
S Series – Small size	Page 20-21
M Series	Page 22-23
Aluminium Die Casting Box	Page 24
Dual door	Page 25
All-in-one Dual door	Page 26
Aluminium housing for inserting card	Page 27
Cable Glands and Accessories	Page 28-33

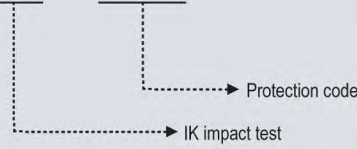
JDA box Ingress Protection Grade

Water, dust-proof grade IP66/67, Degree of strength IK07/08

IP - 00



IK - 00



IEC

(International Electrotechnical Commission) defines protection structure of electric instruments or protection boxes as follows.

* JDA box has tested the enclosures according to IEC 529 or EN 60529 and EN 50298.

First Number	Protection against solid	Second Number	Protection against liquids	IK Code	Protection against mechanical impact
IP	TEST	IP	TEST	IK	TEST
0	No protection	0	No protection	0	No protection
1	Protected against solid objects up to 50mm, e.g. accidental touch by hands.	1	Protection against vertically falling drops of water e.g. condensation.	01 05	Impact < 1 joule
2	Protected against solid objects up to 12mm, e.g. fingers.	2	Protection against direct sprays of water up to 15° from the vertical.	06	Impact = 1 joule
3	Protected against solid objects over 2.5mm (tools and wires).	3	Protection against direct sprays of water up to 60° from the vertical.	07	Impact = 2 joule
4	Protected against solid objects over 1mm (tools, wires and small wire).	4	Protection against water sprays from all directions or limited ingress permitted.	08	Impact = 5 joule
5	Protected against dust limited ingress (no harmful deposit).	5	Protected against low pressure jets of water from all directions or limited ingress.	09	Impact = 10 joule
6	Totally protected against dust.	6	Protected against low pressure jets of water, e.g. for use on ship decks—limited ingress permitted.	10	Impact = 20 joule
		7	15cm min Protected against the effect of immersion between 15cm and 1mm		
		8	1m Protected against long periods of immersion under pressure.		

Note: Subject to change without any notice.

■ Features of plastic material of JDA box

1. It has few decolorization and discoloration even used for a long time at outside owing to addition of Ultraviolet Stabilizer.
2. It protects electric/electronic instruments by using the material with addition of static electricity protecting material.
3. It is easy to make without breakage in hole and press process and it is very strong against outside impact as it is made of high impact resistant material.
4. We can supply optimized products which will be made of ordered material you request considering purpose and area used besides standard specification.

■ Combustion retardant property of JDA box plastic material

- ABS (Grey color) : 94-HB(Standard) or 94-V-0 (Options applied for terminal block)
- ABS (Garish Blue color) : 94-5VB or 94-V-0
- PC/ABS : 94-5VA
- PC (Transparent) : 94-HB(Standard) or 94-V-0 (Options applied for terminal block)
- PC (Grey) : 94-V-0

■ Plastic materials by model

JDA-AGP, AGH, AGS, AGM: Cover(ABS), Base(ABS)
 JDA-PGP, PGH, PGS, PGM: Cover(PC/ABS), Base(PC/ABS)
 JDA-CGP, CGH, CGS, CGM: Cover(PC), Base(PC)

JDA-ATP, ATH, ATS, ATM: Cover(PC), Base(ABS)
 JDA-PTP, PTH, PTS, PTM: Cover(PC), Base(PC/ABS)
 JDA-CTP, CTH, CTS, CTM: Cover(PC), Base(PC)

Certification

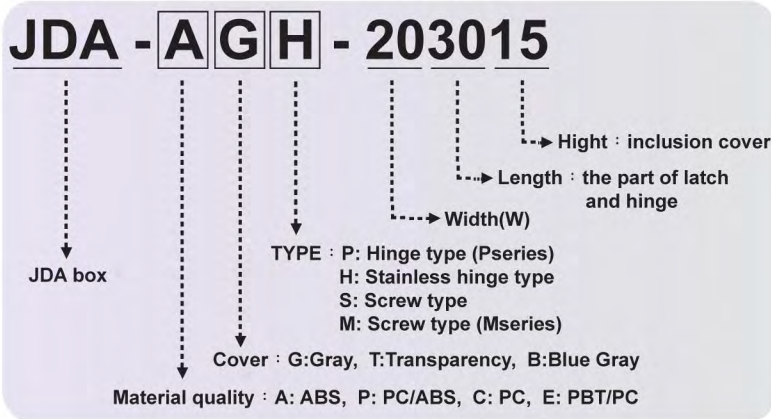


■ Characteristics of JDA box plastic enclosure

<p>P series—draw latch, integrated hinge</p> <p>It is very strong, easy to remove cover and convenient to make hole or print as main parts of draw latch are made of stainless steel and hinge is made of plastic in integrated type.</p>		<p>Bracket attachment part</p> <p>If helps to fix the box tightly as brass insert is inserted in injection molding.</p>	
<p>P series – roof function</p> <p>It is protruded at base. It protects penetration of water at ordinary times and penetration of dust when opening/closing the cover.</p>		<p>SUS bracket</p> <p>You can use this bracket to fix the box at the wall.</p>	
<p>H series – SUS Latch</p> <p>It prevents loosening by vibration etc. It has double lock system.</p>		<p>Back Panel connecting part</p> <p>Inner panel equipped with heavy parts can be fixed tightly as brass insert is inserted in injection molding.</p>	
<p>H series – SUS Hinge</p> <p>To ensure durability is hinge has various application to each size of enclosure.</p>		<p>Plastic Back Panel</p> <p>It is easy to make hole and it has excellent insulation property. It is made to be strong with ABS material.</p>	
<p>H series – Rubber washer</p> <p>It is used for water proofing or dust proofing in installation of hinge, draw latch or other parts.</p>		<p>Key ring</p> <p>It can hang a lock on enclosure.</p>	
<p>S series – Cover bolt connecting part</p> <p>It is strong as screw thread was made in injection molding.</p>		<p>Lock</p> <p>Embedded lock</p>	
<p>S series – Slide marking</p> <p>It was made to make hold only with small drill in installation of hinge or draw latch.</p>		<p>Plastic lock</p> <p>Water proof lock</p>	
<p>S series – General marking</p> <p>It has excellent airtightness due to accurate puncture on marking part in installation of hinge or draw latch</p>		<p>P series— draw latch lock</p> <p>It is intergrated with draw and key lock for P type</p>	
<p>M series—Screw type</p> <p>It is designed to have lower surface of the cover considering attachment of membrane keyboard.</p>		<p>Gasket</p> <p>It has excellent water and dust proofing performance as it injects gasket solution with super precise CNC robot machine.</p>	

Note: Subject to change without any notice.

How to choose JDA box's products



P Series	
MODEL	Width×Length×Height
JDA - □□P-354512	350 × 450 × 120
JDA - □□P-354516	350 × 450 × 160
JDA - □□P-354520	350 × 450 × 200
JDA - □□P-405016	400 × 500 × 160
NEW JDA - □□P-405020	400 × 500 × 200
NEW JDA - □□P-406018	400 × 600 × 180
NEW JDA - □□P-406023	400 × 600 × 230
JDA - □□P-506018	530 × 630 × 185
JDA - □□P-506025	530 × 630 × 255
JDA - □□P-507018	530 × 730 × 185
JDA - □□P-507025	530 × 730 × 255
JDA - □□P-608018	630 × 830 × 185
JDA - □□P-608028	630 × 830 × 285



P Series	
MODEL	Width×Length×Height
JDA - □□P-091207	90 × 120 × 70
JDA - □□P-091208	90 × 120 × 85
JDA - □□P-101507	100 × 150 × 70
JDA - □□P-101508	100 × 150 × 85
JDA - □□P-112107	110 × 210 × 75
JDA - □□P-112110	110 × 210 × 100
JDA - □□P-112607	110 × 260 × 75
JDA - □□P-112610	110 × 260 × 100
JDA - □□P-131508	135 × 155 × 85
JDA - □□P-131808	135 × 185 × 85
JDA - □□P-131810	135 × 185 × 100
JDA - □□P-151509	150 × 150 × 90
NEW JDA - □□P-151512	150 × 150 × 120
JDA - □□P-162110	160 × 210 × 100
JDA - □□P-162113	160 × 210 × 130
JDA - □□P-162610	160 × 260 × 100
JDA - □□P-162613	160 × 260 × 130
JDA - □□P-172211	170 × 220 × 110
JDA - □□P-172711	170 × 270 × 110
JDA - □□P-192810	190 × 280 × 100
JDA - □□P-192814	190 × 280 × 140
JDA - □□P-203013	200 × 300 × 130
JDA - □□P-203015	200 × 300 × 150
JDA - □□P-203018	200 × 300 × 180
JDA - □□P-212110	210 × 210 × 100
JDA - □□P-212113	210 × 210 × 130
JDA - □□P-253515	250 × 350 × 150
JDA - □□P-253518	250 × 350 × 180
JDA - □□P-282813	280 × 280 × 130
JDA - □□P-283813	280 × 380 × 130
JDA - □□P-303015	300 × 300 × 150
JDA - □□P-303018	300 × 300 × 180
JDA - □□P-304012	300 × 400 × 120
JDA - □□P-304015	300 × 400 × 150
JDA - □□P-304018	300 × 400 × 180
JDA - □□P-353515	350 × 350 × 150
JDA - □□P-353518	350 × 350 × 180

H Series - Medium and large size	
MODEL	Width×Length×Height
JDA - □□H-222712	225 × 275 × 120
JDA - □□H-272212	275 × 225 × 120
JDA - □□H-203015	200 × 300 × 150
JDA - □□H-302015	300 × 200 × 150
JDA - □□H-203018	200 × 300 × 180
JDA - □□H-302018	300 × 200 × 180
JDA - □□H-253515	250 × 350 × 150
JDA - □□H-352515	350 × 250 × 150
JDA - □□H-304015	300 × 400 × 150
JDA - □□H-403015	400 × 300 × 150
JDA - □□H-304018	300 × 400 × 180
JDA - □□H-403018	400 × 300 × 180
JDA - □□H-334318	330 × 430 × 180
JDA - □□H-433318	430 × 330 × 180
JDA - □□H-354516	350 × 450 × 160
JDA - □□H-453516	450 × 350 × 160
JDA - □□H-354520	350 × 450 × 200
JDA - □□H-453520	450 × 350 × 200
JDA - □□H-405020	400 × 500 × 200
JDA - □□H-504020	500 × 400 × 200
JDA - □□H-406023	400 × 600 × 230
JDA - □□H-604023	600 × 400 × 230



H Series - Medium and large size	
MODEL	Width×Length×Height
JDA - A□H-191913	190 × 190 × 130
JDA - A□H-192813	190 × 280 × 130

Note: Subject to change without any notice.

H Series – Medium size

MODEL	Width×Length×Height
JDA-A□H-281913	280×190×130
NEW JDA-A□H-192818	190×280×180
NEW JDA-A□H-281918	280×190×180
JDA-A□H-193813	190×380×130
JDA-A□H-381913	380×190×130
NEW JDA-A□H-193818	190×380×180
NEW JDA-A□H-381918	380×190×180
JDA-A□H-282813	280×280×130
JDA-A□H-283413	280×340×130
JDA-A□H-342813	340×280×130
JDA-A□H-283813	280×380×130
JDA-A□H-382813	380×280×130
JDA-A□H-283818	280×380×180
JDA-A□H-382818	380×280×180
JDA-A□H-285613	280×560×130
JDA-A□H-562813	560×280×130
NEW JDA-A□H-334318	330×430×180
NEW JDA-A□H-433318	430×330×180
JDA-A□H-385618	380×560×180
JDA-A□H-563818	560×380×180



H Series – Small size

MODEL	Width×Length×Height
JDA-□□H-151510	150×150×100
JDA-□□H-152007	150×200×75
JDA-□□H-201507	200×150×75
JDA-□□H-152010	150×200×100
JDA-□□H-201510	200×150×100
JDA-□□H-152013	150×200×130
JDA-□□H-201513	200×150×130
NEW JDA-□□H-152016	150×200×160
NEW JDA-□□H-201516	200×150×160
JDA-□□H-152510	150×250×100
JDA-□□H-251510	250×150×100
JDA-□□H-152513	150×250×130
JDA-□□H-251513	250×150×130
JDA-□□H-202010	200×200×100
JDA-□□H-202013	200×200×130
JDA-□□H-202016	200×200×160



H Series – Small size

MODEL	Width×Length×Height
JDA-□□H-081107	80×110×70
JDA-□□H-110807	110×80×70
JDA-□□H-081108	80×110×85
JDA-□□H-110808	110×80×85
JDA-□□H-081307	80×130×70
JDA-□□H-130807	130×80×70
JDA-□□H-081308	80×130×85
JDA-□□H-130808	130×80×85
JDA-□□H-081807	80×180×70
JDA-□□H-180807	180×80×70
JDA-□□H-081808	80×180×85
JDA-□□H-180808	180×80×85
JDA-□□H-082507	80×250×70
JDA-□□H-250807	250×80×70
JDA-□□H-082508	80×250×85
JDA-□□H-250808	250×80×85
JDA-□□H-101007	100×100×75
JDA-□□H-101010	100×100×100
JDA-□□H-121207	125×125×75
JDA-□□H-121210	125×125×100
JDA-□□H-121707	125×175×75
JDA-□□H-171207	175×125×75
JDA-□□H-121710	125×175×100
JDA-□□H-171210	175×125×100
JDA-□□H-141709	140×170×95
JDA-□□H-171409	170×140×95
JDA-□□H-142309	140×230×95
JDA-□□H-231409	230×140×95
JDA-□□H-151507	150×150×75

S Series – Medium size

MODEL	Width×Length×Height
JDA-□□S-191913	190×190×130
JDA-□□S-192813	190×280×130
NEW JDA-□□S-192818	190×280×180
JDA-□□S-193813	190×380×130
NEW JDA-□□S-193818	190×380×180
JDA-□□S-282813	280×280×130
JDA-□□S-283413	280×340×130
JDA-□□S-283813	280×380×130
JDA-□□S-283818	280×380×180
JDA-□□S-285613	280×560×130
NEW JDA-□□S-334318	330×430×180
JDA-□□S-385618	380×560×180



S Series – Small size

MODEL	Width×Length×Height
JDA-□□S-050604	50×65×45
JDA-□□S-050605	50×65×55
JDA-□□S-060905	65×95×55
JDA-□□S-071005	75×105×55

Note: Subject to change without any notice.

S Series - Small size

MODEL	Width×Length×Height
JDA - □□S-080806	80 × 80 × 60
JDA - □□S-081104	80 × 110 × 45
JDA - □□S-081107	80 × 110 × 70
JDA - □□S-081108	80 × 110 × 85
JDA - □□S-081307	80 × 130 × 70
JDA - □□S-081308	80 × 130 × 85
JDA - □□S-081605	80 × 160 × 55
JDA - □□S-081608	80 × 160 × 85
JDA - □□S-081807	80 × 180 × 70
JDA - □□S-081808	80 × 180 × 85
JDA - □□S-082507	80 × 250 × 70
JDA - □□S-082508	80 × 250 × 85
JDA - □□S-101007	100 × 100 × 75
JDA - □□S-101010	100 × 100 × 100
JDA - □□S-101807	100 × 185 × 70
JDA - □□S-102007	100 × 200 × 70
JDA - □□S-102307	100 × 230 × 70
JDA - □□S-121207	125 × 125 × 75
JDA - □□S-121210	125 × 125 × 100
JDA - □□S-121707	125 × 175 × 75
JDA - □□S-121710	125 × 175 × 100
JDA - □□S-141709	140 × 170 × 95
JDA - □□S-142309	140 × 230 × 95
JDA - □□S-151507	150 × 150 × 75
JDA - □□S-151510	150 × 150 × 100
JDA - □□S-152007	150 × 200 × 75
JDA - □□S-152010	150 × 200 × 100
JDA - □□S-152013	150 × 200 × 130
NEW JDA - □□S-152016	150 × 200 × 160
JDA - □□S-152510	150 × 250 × 100
JDA - □□S-152513	150 × 250 × 130
JDA - □□S-161607	160 × 160 × 70
JDA - □□S-202010	200 × 200 × 100
JDA - □□S-202013	200 × 200 × 130
JDA - □□S-202016	200 × 200 × 160



M Series

MODEL	Width×Length×Height
JDA - □□M-081303	80 × 130 × 35
JDA - □□M-081306	80 × 130 × 60
JDA - □□M-081307	80 × 130 × 75
JDA - □□M-081308	80 × 130 × 85
JDA - □□M-081310	80 × 130 × 100
JDA - □□M-081312	80 × 130 × 125
JDA - □□M-131303	130 × 130 × 35
JDA - □□M-131306	130 × 130 × 60
JDA - □□M-131803	130 × 180 × 35
JDA - □□M-131806	130 × 180 × 60
JDA - □□M-151806	150 × 180 × 60
JDA - □□M-181806	180 × 180 × 60
JDA - □□M-181807	180 × 180 × 75
JDA - □□M-181810	180 × 180 × 100
JDA - □□M-181812	180 × 180 × 125
JDA - □□M-182507	180 × 255 × 75
JDA - □□M-182510	180 × 255 × 100
JDA - □□M-182512	180 × 255 × 125

JDA Aluminium Die Casting box



Aluminium Box

MODEL	Width×Length×Height
NEW JDA -AL-061003	64 × 98 × 34
NEW JDA -AL-080806	80 × 75 × 57
NEW JDA -AL-081306	80 × 125 × 57
NEW JDA -AL-081806	80 × 175 × 57
NEW JDA -AL-082506	80 × 250 × 57
NEW JDA -AL-101008	100 × 100 × 80
NEW JDA -AL-101608	100 × 160 × 80
NEW JDA -AL-121208	120 × 122 × 80
NEW JDA -AL-122208	120 × 220 × 80
NEW JDA -AL-122209	120 × 220 × 90
NEW JDA -AL-151309	150 × 132 × 90
NEW JDA -AL-161609	160 × 160 × 90
NEW JDA -AL-162609	160 × 260 × 90
NEW JDA -AL-181810	180 × 180 × 100
NEW JDA -AL-232011	230 × 200 × 110



Dual door

MODEL	Width×Length×Height
JDA - □□P-203013	200 × 300 × 130
JDA - □□P-203015	200 × 300 × 150
JDA - □□P-203018	200 × 300 × 180
JDA - □□P-253515	250 × 350 × 150
JDA - □□P-253518	250 × 350 × 180
JDA - □□P-282813	280 × 280 × 130
JDA - □□P-283813	280 × 380 × 130
JDA - □□P-303015	300 × 300 × 150
JDA - □□P-303018	300 × 300 × 180
JDA - □□P-304015	300 × 400 × 150
JDA - □□P-304018	300 × 400 × 180
JDA - □□P-354516	350 × 450 × 160
JDA - □□P-354520	350 × 450 × 200
JDA - □□P-405016	400 × 500 × 160
JDA - □□H-405020	400 × 500 × 200
NEW JDA - □□P-405020	400 × 500 × 200
JDA - □□H-406018	400 × 600 × 180
NEW JDA - □□P-406018	400 × 600 × 180
NEW JDA - □□P-406023	400 × 600 × 230
NEW JDA - □□P-506018	530 × 630 × 185
NEW JDA - □□P-506025	530 × 630 × 255

Note: Subject to change without any notice.

■ All - In - One - Dual door



	MODEL	Width×Length×Height
NEW	250×350×160	9.84×13.77×6.29
NEW	250×350×190	9.84×13.77×7.48
NEW	350×450×130	13.77×17.11×5.11
NEW	350×450×170	13.77×17.71×6.69
NEW	350×450×210	13.77×17.71×8.2

■ JDA box aluminium housing for inserting card



JDA aluminium housing for inserting card

	MODEL	Width×Length×Height
NEW	111.5×166×91.5	4.39×6.53×3.6
NEW	173×206×113	6.81×8.11×4.44

■ Size table of cable gland



JDA-PG

MODEL	(Φmm)	MODEL	(Φmm)
JDA-PG-7-G	3~6	JDA-PG-25-G	15~19
JDA-PG-9-G	4~8	JDA-PG-29-G	18~25
JDA-PG-11-G	5~10	JDA-PG-36-G	22~32
JDA-PG-13.5-G	6~12	JDA-PG-42-G	30~38
JDA-PG-16-G	10~14	JDA-PG-48-G	34~44
JDA-PG-19-G	12~15	JDA-PG-63-G	42~50
JDA-PG-21-G	13~18		

JDA-PG-L

MODEL	(Φmm)	MODEL	(Φmm)
JDA-PG-7L-G	3.5~6	JDA-PG-13.5L-G	6~12
JDA-PG-9L-G	4~8	JDA-PG-16L-G	10~14
JDA-PG-11L-G	5~10		

JDA-BP-PG

MODEL	(Φmm)	MODEL	(Φmm)
JDA-BP-PG 7	3~5.5	JDA-BP-PG13.5	7~12.5
JDA-BP-PG 9	8~4.5	JDA-BP-PG16	8.5~14
JDA-BP-PG11	6~10	JDA-BP-PG21	12.5~18

JDA-MPG

MODEL	(Φmm)	MODEL	(Φmm)
JDA-MPG-7	3~6.5	JDA-MPG-21	13~18
JDA-MPG-9	4~8	JDA-MPG-29	18~25
JDA-MPG-11	5~10	JDA-MPG-36	22~32
JDA-MPG-13	6~12	JDA-MPG-42	30~38
JDA-MPG-16	8~14	JDA-MPG-48	37~44

JDA-PKM-P

MODEL	(Φmm)	MODEL	(Φmm)
JDA-PKM-P7	6~8	JDA-PKM-P11	10~12
JDA-PKM-P9	8~10	JDA-PKM-P13	12~14

JDA-HSK-EX-P

MODEL	(Φmm)	MODEL	(Φmm)
JDA-HSK-EX-P 7	3~6.5	JDA-HSK-EX-P21	13~18
JDA-HSK-EX-P 9	4~8	JDA-HSK-EX-P29	18~25
JDA-HSK-EX-P11	5~10	JDA-HSK-EX-P36	22~32
JDA-HSK-EX-P13	6~12	JDA-HSK-EX-P42	30~38
JDA-HSK-EX-P16	8~14	JDA-HSK-EX-P48	37~44

JDA-HSM-EX-P

MODEL	(Φmm)	MODEL	(Φmm)
JDA-HSM-EX-P 7	3~6.5	JDA-HSM-EX-P21	13~18
JDA-HSM-EX-P 9	4~8	JDA-HSM-EX-P29	18~25
JDA-HSM-EX-P11	5~10	JDA-HSM-EX-P36	22~32
JDA-HSM-EX-P13	6~12	JDA-HSM-EX-P42	30~38
JDA-HSM-EX-P16	8~14	JDA-HSM-EX-P48	37~44

JDA-RG-PG

MODEL	(Φmm)	MODEL	(Φmm)
JDA-RG-PG 7	3~5	JDA-RG-PG21	14~20
JDA-RG-PG 9	5~7	JDA-RG-PG29	20~26
JDA-RG-PG11	7~10	JDA-RG-PG36	26~35
JDA-RG-PG16	10~14		

JDA-M

MODEL	(Φmm)	MODEL	(Φmm)
JDA-M-12	3~6.5	JDA-M-32	18~25
JDA-M-16	4~8	JDA-M-40	22~32
JDA-M-20	6~12	JDA-M-50	32~38
JDA-M-25	13~18	JDA-M-63	37~44

JDA-BP-M

MODEL	(Φmm)	MODEL	(Φmm)
JDA-BP-M-12	3~6.5	JDA-BP-M-20	6~12
JDA-BP-M-16	4~8	JDA-BP-M-25	13~18

JDA-MM

MODEL	(Φmm)	MODEL	(Φmm)
JDA-MM-12	3~6.5	JDA-MM-32	18~25
JDA-MM-16	4~8	JDA-MM-40	22~32
JDA-MM-20	6~12	JDA-MM-50	32~38
JDA-MM-25	13~18	JDA-MM-63	37~44

JDA-SP-PG	JDA-MSP-PG	JDA-HP-PG	JDA-DPM-P
Article no.	Article no.	Article no.	Article no.
JDA-SP-PG 7	JDA-MSP-7	JDA-HP-PG 8	JDA-DPM-P 7
JDA-SP-PG 9	JDA-MSP-9	JDA-HP-PG10	JDA-DPM-P 9
JDA-SP-PG11	JDA-MSP-11	JDA-HP-PG13	JDA-DPM-P11
JDA-SP-PG13.5	JDA-MSP-13.5	JDA-HP-PG16	JDA-DPM-P13
JDA-SP-PG16	JDA-MSP-16	JDA-HP-PG19	JDA-DPM-P16
JDA-SP-PG21	JDA-MSP-21	JDA-HP-PG22	JDA-DPM-P21
JDA-SP-PG29	JDA-MSP-29	JDA-HP-PG26	JDA-DPM-P29
JDA-SP-PG36	JDA-MSP-36	JDA-HP-PG30	JDA-DPM-P36
JDA-SP-PG42	JDA-MSP-42		JDA-DPM-P42
JDA-SP-PG48	JDA-MSP-48		JDA-DPM-P48

JDA-SP-M		JDA-MSP-PG	
Article no.	Article no.	Article no.	Article no.
JDA-SP-M-12	JDA-SP-M-27	JDA-MSP-M 7	JDA-MSP-M29
JDA-SP-M-16	JDA-SP-M-32	JDA-MSP-M 9	JDA-MSP-M36
JDA-SP-M-18	JDA-SP-M-40	JDA-MSP-M11	JDA-MSP-M42
JDA-SP-M-20	JDA-SP-M-50	JDA-MSP-M13.5	JDA-MSP-M48
JDA-SP-M-22	JDA-SP-M-63	JDA-MSP-M16	
JDA-SP-M-25		JDA-MSP-M21	

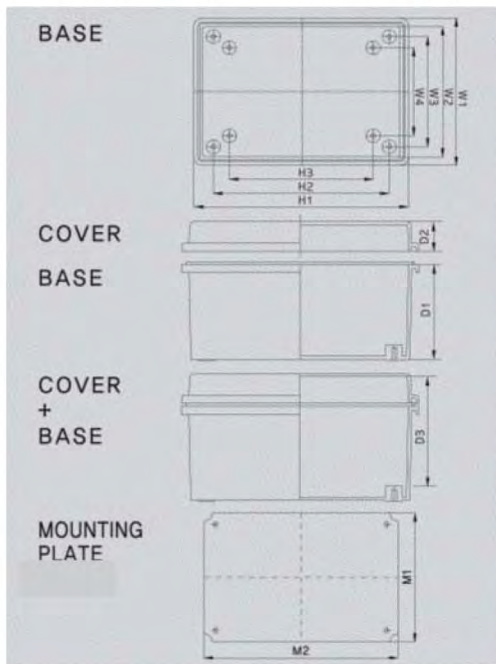
Note: Subject to change without any notice.

■ P Series



The dimension of mounting plate is based on the plastic mounting plate and the dimension of around bracket is steel's mounting plate.

Dimension (allowable error ± 1mm)



Size	Division				H1	H2	H3	D1	D2	D3
	W1	W2	W3	W4						
90×120×70	90	77.5	50	0	128.4	80	69	50	20	51.5
90×120×85	90	77.5	50	0	128.4	80	69	65	20	66.5
100×150×70	100	87.5	60	0	158.4	110	99	50	20	51.5
100×150×85	100	87.5	60	0	158.4	110	99	65	20	66.5
110×210×75	110	87.7	70	0	218.4	170	158	55	20	56.5
110×210×100	110	87.7	70	0	218.4	170	158	80	20	81.5
110×260×75	110	87.7	70	0	268.4	220	208	55	20	56.5
110×260×100	110	87.7	70	0	268.4	220	208	80	20	81.5
135×155×85	135	115	105	0	150	119.3	110	65	20	67.5
135×185×85	135	108	95	0	193.4	145	140	65	20	67.5
135×185×100	135	108	95	0	193.4	145	140	80	20	82.5
150×150×90	150	130	120	0	150	120	110	70	20	71.5
150×150×120	150	130	120	0	150	120	110	100	20	101.5
160×210×100	160	137	120	0	218.4	170	160	75	25	81.5
160×210×130	160	137	120	0	218.4	170	160	105	25	111.5
160×260×100	160	144.6	120	0	268.4	220	210	75	25	85.5
160×260×130	160	144.6	120	0	268.4	220	210	105	25	111.5
170×220×110	170	149.6	132	0	228.4	182	160	80	30	93
170×270×110	170	149.6	132	0	278.4	232	210	80	30	93
190×280×100	190	173.5	148	120	288.4	238	210	70	30	108.5
190×280×140	190	173.5	148	120	288.4	238	210	110	30	128.5
200×300×130	200	181.8	152	129	308.4	252	226	100	30	108
200×300×150	200	181.8	152	129	308.4	252	226	120	30	128.5
200×300×180	200	181.8	152	129	308.4	252	226	150	30	158.5
210×210×100	210	192.3	170	120	218.4	170	150	75	25	81.5
210×210×130	210	192.3	170	120	218.4	170	150	105	25	111.5
250×350×150	250	231.8	202	180	358.4	302	271	120	30	130
250×350×180	250	231.8	202	180	358.4	302	271	150	30	160
280×280×130	280	264.1	238	210	288.4	238	210	100	30	108
280×380×130	280	264.1	238	210	388.4	338	310	100	30	108
300×300×150	300	283.3	252	230	308.4	252	219	120	30	131.5
300×300×180	300	283.3	252	230	308.4	252	219	150	30	161.5
300×400×120	300	275.5	252	228	408.4	352	325	90	30	98.5
300×400×150	300	275.5	252	228	408.4	352	325	120	30	128.5
300×400×180	300	275.5	252	228	408.4	352	325	150	30	158.5
350×350×150	350	333.8	302	270	358.4	302	270	120	30	132
350×350×180	350	333.8	302	270	358.4	302	270	150	30	162
350×450×120	350	325.4	300	274	457.4	400	365	90	30	98
350×450×160	350	325.4	300	274	457.4	400	365	130	30	138
350×450×200	350	325.4	300	274	457.4	400	365	170	30	178
400×500×160	400	370.5	352	328	511.4	452	428	130	30	137
400×500×200	400	370.5	352	328	511.4	452	428	170	30	178
400×600×180	401	370.5	352	328	611.4	552	525	150	30	158
400×600×230	401	370.5	352	328	611.4	552	525	200	30	208
530×630×185	530	487.4	462	426	641.4	562	526	150	35	163
530×630×255	530	487.4	462	426	641.4	562	526	220	35	233
530×730×185	530	487.4	462	426	741.4	662	626	150	35	163
530×730×255	530	487.4	462	426	741.4	662	626	220	35	233
630×830×185	630	581.9	562	526	841.4	762	726	150	35	163
630×830×285	630	581.9	562	526	841.4	762	726	250	35	253

Level of dustproof and waterproof	IP 66~67
Impact test	IK 08
Critical temperature	ABS : -40~85 PC : -40~+120
Burn poorly	PC/ABS : 0~5VA ABS : 94-V-0

Note: Subject to change without any notice.

Product Characteristics

1. It is designed to prevent the penetration of rain or dust perfectly double as roof is protruded from top and bottom of the base.
2. It is easy to separate cover and base so that user can attach or detach them for processing and printing.
3. Insert hinge into the product and hinge connecting pin and important parts of draw latch are made of stainless steel so that it is very strong and corrosion resistant.

Model and size

Model and size (cover included)		Product model			Plate Model		Plate Size		
Width×Length×Height (mm)	Width×Length×Height (inch)	ABS		PC / ABS		Steel mounting plate 1.6mm	Plastic mounting plate 3~4.5mm	M1	M2
		G:Grey Cover,T:Transparent Cover	G:Grey Cover,T:Transparent Cover	G:Grey Cover,T:Transparent Cover	G:Grey Cover,T:Transparent Cover				
90×120×70	3.54×4.72×2.76	JDA-A□P-091207	JDA-P□P-091207	JDA-C□P-091207	0912 S	0912 P	65	95	
90×120×85	3.54×4.72×3.35	JDA-A□P-091208	JDA-P□P-091208	JDA-C□P-091208	0912 S	0912 P	65	95	
100×150×70	3.94×5.91×2.76	JDA-A□P-101507	JDA-P□P-101507	JDA-C□P-101507	1015 S	1015 P	65	115	
100×150×85	3.94×5.91×3.35	JDA-A□P-101508	JDA-P□P-101508	JDA-C□P-101508	1015 S	1015 P	65	115	
110×210×75	4.33×8.27×2.95	JDA-A□P-112107	JDA-P□P-112107	JDA-C□P-112107	1121 S	1121 P	88	189	
110×210×100	4.33×8.27×3.94	JDA-A□P-112110	JDA-P□P-112110	JDA-C□P-112110	1121 S	1121 P	88	189	
110×260×75	4.33×10.24×2.95	JDA-A□P-112607	JDA-P□P-112607	JDA-C□P-112607	1126 S	1126 P	85	232	
110×260×100	4.33×10.24×3.94	JDA-A□P-112610	JDA-P□P-112610	JDA-C□P-112610	1126 S	1126 P	85	232	
135×155×85	5.12×5.91×3.35	JDA-A□P-131508	JDA-P□P-131508	JDA-C□P-131508	1315 S	1315 P	101	126	
135×185×85	5.12×7.09×3.35	JDA-A□P-131808	JDA-P□P-131808	JDA-C□P-131808	1318 S	1318 P	113	161	
135×185×100	5.12×7.09×3.94	JDA-A□P-131810	JDA-P□P-131810	JDA-C□P-131810	1318 S	1318 P	113	161	
150×150×90	5.91×5.91×3.54	JDA-A□P-151509	JDA-P□P-151509	JDA-C□P-151509	1515 S	1515 P	123	123	
150×150×120	5.91×5.91×4.72	JDA-A□P-151509	JDA-P□P-151509	JDA-C□P-151509	1515 S	1515 P	123	123	
160×210×100	6.30×8.27×3.94	JDA-A□P-162110	JDA-P□P-162110	JDA-C□P-162110	1621 S	1621 P	129	179	
160×210×130	6.30×8.27×5.12	JDA-A□P-162113	JDA-P□P-162113	JDA-C□P-162113	1621 S	1621 P	129	179	
160×260×100	6.30×10.24×3.94	JDA-A□P-162610	JDA-P□P-162610	JDA-C□P-162610	1626 S	1626 P	129	224	
160×260×130	6.30×10.24×5.12	JDA-A□P-162613	JDA-P□P-162613	JDA-C□P-162613	1626 S	1626 P	129	224	
170×220×110	6.69×8.66×4.33	JDA-A□P-172211	JDA-P□P-172211	JDA-C□P-172211	1722 S	1722 P	129	179	
170×270×110	6.69×10.63×4.33	JDA-A□P-172711	JDA-P□P-172711	JDA-C□P-172711	1727 S	1727 P	129	224	
190×280×100	7.48×11.02×3.94	JDA-A□P-192810	JDA-P□P-192810	JDA-C□P-192810	1928 S	1928 P	159	248	
190×280×140	7.48×11.02×5.51	JDA-A□P-192814	JDA-P□P-192814	JDA-C□P-192814	1928 S	1928 P	159	248	
200×300×130	7.87×11.81×5.12	JDA-A□P-203013	JDA-P□P-203013	JDA-C□P-203013	2030 S	2030 P	166	266	
200×300×150	7.87×11.81×5.91	JDA-A□P-203015	JDA-P□P-203015	JDA-C□P-203015	2030 S	2030 P	166	266	
200×300×180	8.27×8.27×3.94	JDA-A□P-203018	JDA-P□P-203018	JDA-C□P-203018	2030 S	2030 P	166	266	
210×210×100	8.27×8.27×5.12	JDA-A□P-212110	JDA-P□P-212110	JDA-C□P-212110	2121 S	2121 P	179	179	
210×210×130	8.78×11.81×7.09	JDA-A□P-212113	JDA-P□P-212113	JDA-C□P-212113	2121 S	2121 P	179	179	
250×350×150	9.84×13.78×5.91	JDA-A□P-253515	JDA-P□P-253515	JDA-C□P-253515	2535 S	2535 P	216	316	
250×350×180	9.84×13.78×7.09	JDA-A□P-253518	JDA-P□P-253518	JDA-C□P-253518	2535 S	2535 P	216	316	
280×280×130	11.02×11.02×5.12	JDA-A□P-282813	JDA-P□P-282813	JDA-C□P-282813	2828 S	2828 P	248	248	
280×380×130	11.02×14.96×5.12	JDA-A□P-283813	JDA-P□P-283813	JDA-C□P-283813	2838 S	2838 P	248	348	
300×300×150	11.81×11.81×5.91	JDA-A□P-303015	JDA-P□P-303015	JDA-C□P-303015	3030 S	3030 P	262	262	
300×300×180	11.81×11.81×7.09	JDA-A□P-303018	JDA-P□P-303018	JDA-C□P-303018	3030 S	3030 P	262	262	
300×400×120	11.81×15.75×4.72	JDA-A□P-304012	JDA-P□P-304012	JDA-C□P-304012	3040 S	3040 P	265	365	
300×400×150	11.81×15.75×5.91	JDA-A□P-304015	JDA-P□P-304015	JDA-C□P-304015	3040 S	3040 P	265	365	
300×400×180	11.81×15.75×7.09	JDA-A□P-304018	JDA-P□P-304018	JDA-C□P-304018	3040 S	3040 P	265	365	
350×350×150	13.78×13.78×5.91	JDA-A□P-353515	JDA-P□P-353515	JDA-C□P-353515	3535 S	3535 P	320	320	
350×350×180	13.78×13.78×7.09	JDA-A□P-353518	JDA-P□P-353518	JDA-C□P-353518	3535 S	3535 P	320	320	
350×450×120	13.78×17.72×4.72	JDA-A□P-354512	JDA-P□P-354512	JDA-C□P-354512	3545 S	3545 P	306	407	
350×450×160	13.78×17.72×6.30	JDA-A□P-354516	JDA-P□P-354516	JDA-C□P-354516	3545 S	3545 P	306	407	
350×450×200	13.78×17.72×7.87	JDA-A□P-354520	JDA-P□P-354520	JDA-C□P-354520	3545 S	3545 P	306	407	
400×500×160	15.75×19.69×6.30	JDA-A□P-405016	JDA-P□P-405016	JDA-C□P-405016	4050 S	4050 P	358	458	
400×500×200	15.75×19.69×7.87	JDA-A□P-405020	JDA-P□P-405020	JDA-C□P-405020	4050 S	4050 P	358	458	
400×600×180	15.75×23.62×7.09	JDA-A□P-406018	JDA-P□P-406018	JDA-C□P-406018	4060 S	4060 P	358	558	
400×600×230	15.75×23.62×9.06	JDA-A□P-406023	JDA-P□P-406023	JDA-C□P-406023	4060 S	4060 P	358	558	
530×630×185	20.87×24.80×7.28	JDA-A□P-506018	JDA-P□P-506018	JDA-C□P-506018	5060 S	5060 P	450	555	
530×630×255	20.87×24.80×10.04	JDA-A□P-506025	JDA-P□P-506025	JDA-C□P-506025	5060 S	5060 P	450	555	
530×730×185	20.87×28.74×7.28	JDA-A□P-507018	JDA-P□P-507018	JDA-C□P-507018	5070 S	5070 P	450	655	
530×730×255	20.87×28.74×10.04	JDA-A□P-507025	JDA-P□P-507025	JDA-C□P-507025	5070 S	5070 P	450	655	
630×830×185	24.80×32.68×7.28	JDA-A□P-608018	JDA-P□P-608018	JDA-C□P-608018	6080 S	6080 P	550	755	
630×830×285	24.80×32.68×11.22	JDA-A□P-608028	JDA-P□P-608028	JDA-C□P-608028	6080 S	6080 P	550	755	

Accessories



Steel back panel (zinc plating)



Plastic back panel (ABS)



Key ring (K40)



Locker (SK)



Plastic locker (PK)



JDA-PSK



Wall mounting bracket (B40, B50, B60)



Vent (V60, V80)



Plastic bracket (PB20, 25)

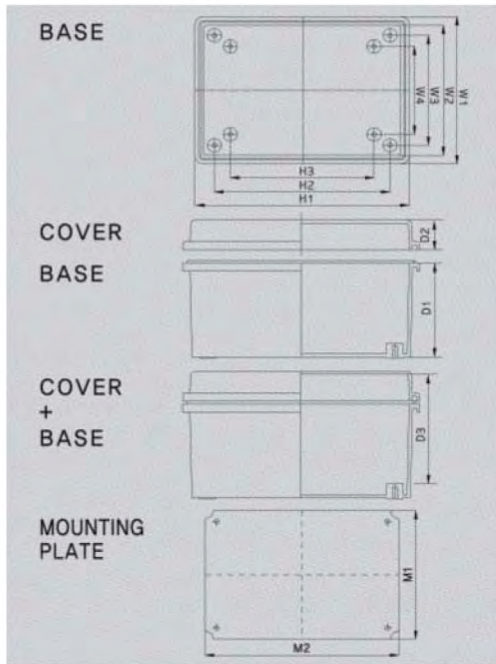
Note: Subject to change without any notice.

■ H Series - Medium and large size



The dimension of mounting plate is based on the plastic mounting plate and the dimension of around bracket is steel's mounting plate.

Dimension (allowable error ± 1mm)



Size	Division				H1	H2	H3	H4	D1	D2	D3
	W1	W2	W3	W4							
225 × 275 × 120	225	219	204.6	183	276	270	234	210	90	30	98
275 × 225 × 120	276	270	234	210	225	219	204	183	90	30	98
200 × 300 × 150	200	180	152	129	300	280	252	226	120	30	128.5
300 × 200 × 150	300	280	252	226	200	180	152	129	120	30	128.5
200 × 300 × 180	200	180	152	129	300	280	252	226	150	30	158.5
300 × 200 × 180	300	280	252	226	200	180	152	129	150	30	158.5
250 × 350 × 150	250	230	206	180	350	330	306	269	120	30	128.5
350 × 250 × 150	350	330	306	269	250	230	206	180	120	30	128.5
300 × 400 × 150	300	280	252	230	400	380	352	325	120	30	128
400 × 300 × 150	400	380	352	325	300	280	252	230	120	30	128
300 × 400 × 180	300	280	252	230	400	380	352	325	150	30	158
400 × 300 × 180	400	380	352	325	300	280	252	230	150	30	158
330 × 430 × 180	330	310	286	250	430	410	386	350	150	30	158.5
430 × 330 × 180	430	410	386	350	330	310	286	250	150	30	158.5
350 × 450 × 160	350	323	298	276	450	423	398	376	130	30	138
450 × 350 × 160	450	423	398	376	350	323	298	276	130	30	138
350 × 450 × 200	350	323	298	276	450	423	398	376	170	30	178
450 × 350 × 200	450	423	398	376	350	323	298	276	170	30	178
400 × 500 × 200	402	375	352	328	502	475	452	428	170	30	178
500 × 400 × 200	502	475	452	428	402	375	352	328	170	30	178
400 × 600 × 230	402	375	352	328	602	575	552	525	200	30	208
600 × 400 × 230	602	575	552	525	402	375	352	328	200	30	208

Level of dustproof and waterproof
IP 66~67
Impact test
IK 08
Critical temperature
ABS : -40~85
PC : -40~+120
Burn poorly
PC/ABS : 0~5VA
ABS : 94-V-0

Note: Subject to change without any notice.

Product Characteristics

1. It will not be damaged even using for a long time because stainless steel hinge and draw latch are equipped.
2. It secures perfect airtightness by preventing sink down when opening or closing by increasing the sizes of hinge and draw latch by size increasing of the products.
3. It can be used in inferior dangerous industrial field by using strong material and structure.

Model and size

Model and size (cover included)		Product model			Plate Model		Plate Size	
Width×Length×Height (mm)	Width×Length×Height (inch)	ABS	PC / ABS	PC	Steel mounting plate 1.6mm	Plastic mounting plate 3~4.5mm	M1	M2
		G:Grey Cover,T:Transparent Cover	G:Grey Cover,T:Transparent Cover	G:Grey Cover,T:Transparent Cover				
225×275×120	8.86×10.83×4.72	JDA-A□H-222712	JDA-P□H-222712	JDA-C□H-222712	2227 S	2227 P	190	242
275×225×120	10.83×8.86×4.72	JDA-A□H-272212	JDA-P□H-272212	JDA-C□H-272212	2227 S	2227 P	190	242
200×300×150	7.87×11.81×5.91	JDA-A□H-203015	JDA-P□H-203015	JDA-C□H-203015	2030 S	2030 P	166	266
300×200×150	11.81×7.87×5.91	JDA-A□H-302015	JDA-P□H-302015	JDA-C□H-302015	2030 S	2030 P	166	266
200×300×180	7.87×11.81×7.09	JDA-A□H-203018	JDA-P□H-203018	JDA-C□H-203018	2030 S	2030 P	166	266
300×200×180	11.81×7.87×7.09	JDA-A□H-302018	JDA-P□H-302018	JDA-C□H-302018	2030 S	2030 P	166	266
250×350×150	9.84×13.78×5.91	JDA-A□H-253515	JDA-P□H-253515	JDA-C□H-253515	2535 S	2535 P	216	316
350×250×150	13.78×9.84×5.91	JDA-A□H-352515	JDA-P□H-352515	JDA-C□H-352515	2535 S	2535 P	216	316
300×400×150	11.81×15.75×5.91	JDA-A□H-304015	JDA-P□H-304015	JDA-C□H-304015	3040 S	3040 P	265	365
400×300×150	15.75×11.81×5.91	JDA-A□H-403015	JDA-P□H-403015	JDA-C□H-403015	3040 S	3040 P	265	365
300×400×180	11.81×15.75×7.09	JDA-A□H-304018	JDA-P□H-304018	JDA-C□H-304018	3040 S	3040 P	265	365
400×300×180	15.75×11.81×7.09	JDA-A□H-403018	JDA-P□H-403018	JDA-C□H-403018	3040 S	3040 P	265	365
330×430×180	12.99×16.93×7.09	JDA-A□H-334318	JDA-P□H-334318		3343 S	3343 P	295	395
430×330×180	16.93×12.99×7.09	JDA-A□H-433318	JDA-P□H-433318		3343 S	3343 P	295	395
350×450×160	13.78×17.72×6.30	JDA-A□H-354516	JDA-P□H-354516	JDA-C□H-354516	3545 S	3545 P	306	407
450×350×160	17.72×13.78×6.30	JDA-A□H-453516	JDA-P□H-453516	JDA-C□H-453516	3545 S	3545 P	306	407
350×450×200	13.78×17.72×7.87	JDA-A□H-354520	JDA-P□H-354520	JDA-C□H-354520	3545 S	3545 P	306	407
450×350×200	17.72×13.78×7.87	JDA-A□H-453520	JDA-P□H-453520	JDA-C□H-453520	3545 S	3545 P	306	407
400×500×200	15.75×19.69×7.87	JDA-A□H-405020	JDA-P□H-405020	JDA-C□H-405020	4050 S	4050 P	358	458
500×400×200	19.69×15.75×7.87	JDA-A□H-504020	JDA-P□H-504020	JDA-C□H-504020	4050 S	4050 P	358	458
400×600×230	15.75×23.62×9.06	JDA-A□H-406023	JDA-P□H-406023	JDA-C□H-406023	4060 S	4060 P	358	558
600×400×230	23.62×15.75×9.06	JDA-A□H-604023	JDA-P□H-604023	JDA-C□H-604023	4060 S	4060 P	358	558

600 x 400 x 230 is for non water proof product.

Accessories



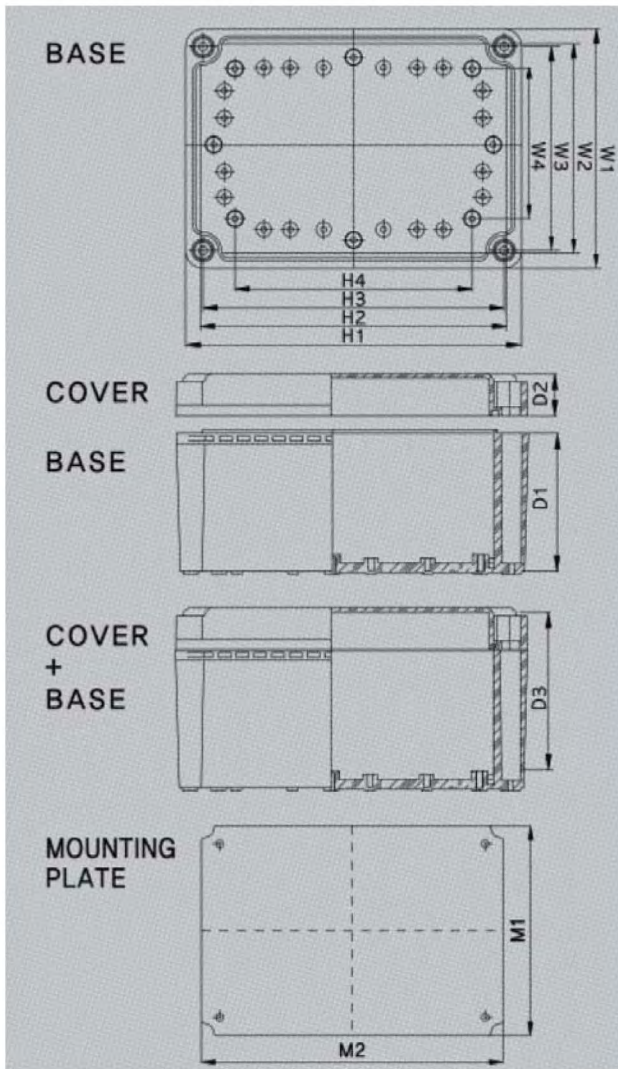
Note: Subject to change without any notice.

▪ H Series - Medium size



The dimension of mounting plate is based on the plastic mounting plate and the dimension of around bracket is steel's mounting plate.

Dimension (allowable error ± 1mm)



Size	Division											
	W1	W2	W3	W4	H1	H2	H3	H4	D1	D2	D3	
190×190×130	190	170	165	120	190	170	165	120	98	30	112	
190×280×130	190	170	165	120	280	266	255	210	98	30	112	
280×190×130	280	266	255	210	190	170	165	120	98	30	112	
190×280×180	190	170	165	120	280	266	255	210	150	30	159	
280×190×180	280	266	255	210	190	170	165	210	150	30	159	
190×380×130	190	170	165	120	380	359	355	310	98	30	109	
380×190×130	380	359	355	310	190	170	165	120	98	30	109	
190×380×180	190	170	165	120	380	360	355	310	150	30	159	
380×190×180	380	359	355	310	190	170	165	120	150	30	159	
280×280×130	280	265	265	210	280	210	255	210	98	30	112	
280×340×130	280	259	254.7	210	340	319	315	270	100	30	111	
340×280×130	340	319	315	270	280	259	254.7	210	100	30	111	
280×380×130	280	266	255	210	380	359	315	310	98	30	111	
380×280×130	380	359	355	310	280	260	255	210	98	30	111	
280×380×180	280	266	255	210	380	359	355	310	148	30	161.5	
380×280×180	380	359	355	310	280	266	255	210	148	30	161.5	
280×560×130	280	266	255	210	560	535	505	490	100	30	120	
560×280×130	560	535	505	490	280	266	255	210	100	30	120	
330×430×180	330	310	266	250	430	410	386	350	150	30	160	
430×330×180	430	410	386	350	330	310	266	250	150	30	160	
380×560×180	380	366	355	310	560	535	505	490	150	30	160	
560×380×180	560	535	505	490	380	366	355	310	150	30	160	

Level of dustproof and waterproof
IP 66~67

Impact test
IK 08

Critical temperature
ABS : -40~85
PC : -40~+120

Burn poorly
PC/ABS : 0~5VA
ABS : 94-V-0

Note: Subject to change without any notice.

Product Characteristics

1. It will not be damaged even using for a long time because stainless steel hinge and draw latch are equipped.
2. It has excellent airtightness as it was designed considering bolt open/close type. hinge made of stainless steel and equipment of draw latch.
3. User make hole on the place of equipment simply.

Model and size

Model and size (cover included)		Product model			Plate Model		Plate Size	
Width×Length×Height (mm)	Width×Length×Height (inch)	ABS	PC / ABS	PC	Steel mounting plate 1.6mm	Plastic mounting plate 3~4.5mm	M1	M2
		G:Grey Cover,T:Transparent Cover	G:Grey Cover,T:Transparent Cover	G:Grey Cover,T:Transparent Cover				
190×190×130	7.48×7.48×5.12	JDA-A□H-191913	JDA-P□H-191913	JDA-C□H-191913	1919 S	1919 P	159	159
190×280×130	7.48×11.02×5.12	JDA-A□H-192813	JDA-P□H-192813	JDA-C□H-192813	1928 S	1928 P	159	248
280×190×130	11.02×7.48×5.12	JDA-A□H-281913	JDA-P□H-281913	JDA-C□H-281913	2819 S	2819 P	159	248
NEW 190×280×180	7.48×11.02×7.09	JDA-A□H-192818	JDA-P□H-192818	JDA-C□H-192818	1928 S	1928 P	159	248
NEW 280×190×180	11.02×7.48×7.09	JDA-A□H-281918	JDA-P□H-281918	JDA-C□H-281918	2819 S	2819 P	159	248
190×380×130	7.48×14.96×5.12	JDA-A□H-193813	JDA-P□H-193813	JDA-C□H-193813	1938 S	1938 P	159	348
380×190×130	14.96×7.48×5.12	JDA-A□H-381913	JDA-P□H-381913	JDA-C□H-381913	3819 S	3819 P	159	348
NEW 190×380×180	7.48×14.96×7.09	JDA-A□H-193818	JDA-P□H-193818	JDA-C□H-193818	1938 S	1938 P	159	348
NEW 380×190×180	14.96×7.48×7.09	JDA-A□H-381918	JDA-P□H-381918	JDA-C□H-381918	3819 S	3819 P	159	348
280×280×130	11.02×11.02×5.12	JDA-A□H-282813	JDA-P□H-282813	JDA-C□H-282813	2828 S	2828 P	248	248
280×340×130	11.02×13.39×5.12	JDA-A□H-283413	JDA-P□H-283413	JDA-C□H-283413	2834 S	2834 P	248	308
340×280×130	13.39×11.02×5.12	JDA-A□H-342813	JDA-P□H-342813	JDA-C□H-342813	3428 S	3428 P	308	248
280×380×130	11.02×14.96×5.12	JDA-A□H-283813	JDA-P□H-283813	JDA-C□H-283813	2838 S	2838 P	248	348
380×280×130	14.96×11.02×5.12	JDA-A□H-382813	JDA-P□H-382813	JDA-C□H-382813	3828 S	3828 P	248	348
280×380×180	11.02×14.96×7.09	JDA-A□H-283818	JDA-P□H-283818	JDA-C□H-283818	2838 S	2838 P	248	348
380×280×180	14.96×11.02×7.09	JDA-A□H-382818	JDA-P□H-382818	JDA-C□H-382818	3828 S	3828 P	348	348
280×560×130	11.02×22.05×5.12	JDA-A□H-285613	JDA-P□H-285613	JDA-C□H-285613	2856 S		(232)	(535)
560×280×130	22.05×11.02×5.12	JDA-A□H-562813	JDA-P□H-562813	JDA-C□H-562813	5828 S		(232)	(535)
NEW 330×430×180	12.99×16.93×7.09	JDA-A□H-334318	JDA-P□H-334318	JDA-C□H-334318	3343 S	3343 P	(295)	(395)
NEW 430×330×180	16.93×12.99×7.09	JDA-A□H-433318	JDA-P□H-433318	JDA-C□H-433318	4333 S	3343 P	(295)	(395)
380×560×180	14.96×22.05×7.09	JDA-A□H-385618	JDA-P□H-385618	JDA-C□H-385618	3856 S		(345)	(535)
560×380×180	22.05×14.96×7.09	JDA-A□H-563818	JDA-P□H-563818	JDA-C□H-563818	5638 S		(345)	(535)

580 x 280 x 130 is for non water proof product. 580 x 380 x 180 is for non water proof product.

Accessories



Steel back panel (zinc plating)



Plastic back panel (ABS)



Key ring (K40)



Locker (SK)



Plastic locker (PK)



Wall mounting bracket (B50)



Draw latch (M65)



Hinge (H65)



Stopper (M22)



Vent (V60, V80)



Plastic bracket (PB25)



Note: Subject to change without any notice.

H Series - Small size



The dimension of mounting plate is based on the plastic mounting plate and the dimension of around bracket is steel's mounting plate

Dimension

	Division	Size											
		W1	W2	W3	W4	H1	H2	H3	H4	D1	D2	D3	
BASE	80 × 110 × 70	80	74	62	0	110	104	92	80	50	20	53	
	110 × 80 × 70	110	104	92	80	80	74	62	0	50	20	53	
	80 × 110 × 85	80	74	62	0	110	104	92	80	50	35	68	
	110 × 80 × 85	110	104	92	80	80	74	62	0	50	35	68	
COVER	80 × 130 × 70	80	74	62	0	130	124	112	100	50	20	53	
	130 × 80 × 70	130	124	112	100	80	74	62	0	50	20	53	
	80 × 130 × 85	80	74	62	0	130	124	112	100	50	35	68	
	130 × 80 × 85	130	124	112	100	80	74	62	0	50	35	68	
BASE	80 × 180 × 70	80	74	62	0	180	174	162	150	50	20	53	
	180 × 80 × 70	180	174	162	150	80	74	62	0	50	20	53	
	80 × 180 × 85	80	74	62	0	180	174	162	150	50	35	68	
	180 × 80 × 85	180	174	162	150	80	74	62	0	50	35	68	
COVER + BASE	80 × 250 × 70	80	74	62	0	250	244	232	220	50	20	52	
	250 × 80 × 70	250	244	232	220	80	74	62	0	50	20	52	
	80 × 250 × 85	80	74	62	0	250	244	232	220	50	35	67	
	250 × 80 × 85	250	244	232	220	80	74	62	0	50	35	67	
MOUNTING PLATE	100 × 100 × 75	100	94	82	0	100	94	82	60	55	20	58	
	100 × 100 × 100	100	94	82	0	100	94	82	60	80	20	83	
	125 × 125 × 75	125	119	105	0	125	119	105	70	55	20	58	
	125 × 125 × 100	125	119	105	0	125	119	105	70	80	20	83	
MOUNTING PLATE	125 × 175 × 75	127	121	109	0	175	169	157	140	50	25	58	
	175 × 125 × 75	175	169	157	140	127	121	109	0	50	25	58	
	125 × 175 × 100	127	121	109	0	175	169	157	140	50	50	83	
	175 × 125 × 100	175	169	157	140	127	121	109	0	50	50	83	
MOUNTING PLATE	140 × 170 × 95	143	137	122	0	173	167	152	130	75	20	77	
	170 × 140 × 95	173	167	152	130	143	137	122	0	75	20	77	
	140 × 230 × 95	140	134	122	0	230	224	212	190	75	20	77	
	230 × 140 × 95	230	224	212	190	140	134	122	0	75	25	77	
MOUNTING PLATE	150 × 150 × 75	150	144	110	0	150	144	132	110	55	20	58	
	150 × 150 × 100	150	144	110	0	150	144	132	110	80	20	83	
	150 × 200 × 75	150	142	132	0	200	192	182	160	55	20	58	
	200 × 150 × 75	200	192	182	160	150	142	132	0	55	20	58	
MOUNTING PLATE	150 × 200 × 100	150	142	132	0	200	192	182	160	80	20	83	
	200 × 150 × 100	200	192	182	160	150	142	132	0	80	20	83	
	150 × 200 × 130	150	142	132	0	200	192	182	160	110	20	111	
	200 × 150 × 130	200	192	182	160	150	142	132	0	110	20	111	
MOUNTING PLATE	150 × 200 × 160	150	142	132	0	200	192	182	160	110	50	149	
	200 × 150 × 160	200	192	182	160	150	142	132	0	110	50	149	
	150 × 250 × 100	150	142	132	0	250	242	232	210	80	20	83	
	250 × 150 × 100	250	242	232	210	150	142	132	0	80	20	83	
MOUNTING PLATE	150 × 250 × 130	150	142	132	0	250	242	232	210	80	50	113	
	250 × 150 × 130	250	242	232	210	150	142	132	0	80	50	113	
	200 × 200 × 100	200	193	132	0	200	193	182	120	80	20	82	
	200 × 200 × 130	200	193	132	0	200	193	182	120	110	20	111	
MOUNTING PLATE	200 × 200 × 160	200	193	132	0	200	193	182	120	110	50	141	

Note: Subject to change without any notice.

Product characteristics

1. It will not be damaged even using for a long time because stainless steel hinge and draw latch are equipped.
2. Ring is equipped at correct place after processing so that it has perfect airtight and convenience to open and close.
3. We reinforce the thickness and structure to be used longer time.

Model and size

Model and size(cover included)		Product model			Plate Model		Plate Size		
Width×Length×Height (mm)	Width×Length×Height (inch)	ABS		PC / ABS		Steel mounting plate 1.6mm	Plastic mounting plate 3~4.5mm	M1	M2
		G: Grey Cover, T: Transparent Cover	G: Grey Cover, T: Transparent Cover	G: Grey Cover, T: Transparent Cover	G: Grey Cover, T: Transparent Cover				
80×110×70	3.15×4.33×2.76	JDA-A□H-081107	JDA-P□H-081107	JDA-C□H-081107	0811 S	0811 P	64	94	
110×80×70	4.33×3.15×2.76	JDA-A□H-110807	JDA-P□H-110807	JDA-C□H-110807	1108 S	1108 P	64	94	
80×110×85	3.15×4.33×3.35	JDA-A□H-081108	JDA-P□H-081108	JDA-C□H-081108	0811 S	0811 P	64	94	
110×80×85	4.33×3.15×3.35	JDA-A□H-110808	JDA-P□H-110808	JDA-C□H-110808	1108 S	1108 P	64	94	
80×130×70	3.15×5.12×2.76	JDA-A□H-081307	JDA-P□H-081307	JDA-C□H-081307	0813 S	0813 P	65	115	
130×80×70	5.12×3.15×2.76	JDA-A□H-130807	JDA-P□H-130807	JDA-C□H-130807	1308 S	1308 P	65	115	
80×130×85	3.15×5.12×3.35	JDA-A□H-081308	JDA-P□H-081308	JDA-C□H-081308	0813 S	0813 P	65	115	
130×80×85	5.12×3.15×3.35	JDA-A□H-130808	JDA-P□H-130808	JDA-C□H-130808	1308 S	1308 P	65	115	
80×180×70	3.15×7.09×2.76	JDA-A□H-081807	JDA-P□H-081807	JDA-C□H-081807	0818 S	0818 P	65	165	
180×80×70	7.09×3.15×2.76	JDA-A□H-180807	JDA-P□H-180807	JDA-C□H-180807	1808 S	1808 P	65	165	
80×180×85	3.15×7.09×3.35	JDA-A□H-081808	JDA-P□H-081808	JDA-C□H-081808	0818 S	0818 P	65	165	
180×80×85	7.09×3.15×3.35	JDA-A□H-180808	JDA-P□H-180808	JDA-C□H-180808	1808 S	1808 P	65	165	
80×250×70	3.15×9.84×2.76	JDA-A□H-082507	JDA-P□H-082507	JDA-C□H-082507	0825 S	0825 P	65	235	
250×80×70	9.84×3.15×2.76	JDA-A□H-250807	JDA-P□H-250807	JDA-C□H-250807	2508 S	2508 P	65	235	
80×250×85	3.15×9.84×3.35	JDA-A□H-082508	JDA-P□H-082508	JDA-C□H-082508	0825 S	0825 P	65	235	
250×80×85	9.84×3.15×3.35	JDA-A□H-250808	JDA-P□H-250808	JDA-C□H-250808	2508 S	2508 P	65	235	
100×100×75	3.94×3.94×2.95	JDA-A□H-101007	JDA-P□H-101007	JDA-C□H-101007	1010 S	1010 P	82	82	
100×100×100	3.94×3.94×3.94	JDA-A□H-101010	JDA-P□H-101010	JDA-C□H-101010	1010 S	1010 P	82	82	
125×125×75	4.92×4.92×2.95	JDA-A□H-121207	JDA-P□H-121207	JDA-C□H-121207	1212 S	1212 P	107	107	
125×125×100	4.92×4.92×3.94	JDA-A□H-121210	JDA-P□H-121210	JDA-C□H-121210	1212 S	1212 P	107	107	
125×175×75	4.92×6.89×2.95	JDA-A□H-121707	JDA-P□H-121707	JDA-C□H-121707	1217 S	1217 P	113	161	
175×125×75	6.89×4.92×2.95	JDA-A□H-171207	JDA-P□H-171207	JDA-C□H-171207	1712 S	1712 P	113	161	
125×175×100	4.92×6.89×3.94	JDA-A□H-121710	JDA-P□H-121710	JDA-C□H-121710	1217 S	1217 P	113	161	
175×125×100	6.89×4.92×3.94	JDA-A□H-171210	JDA-P□H-171210	JDA-C□H-171210	1712 S	1712 P	113	161	
140×170×95	5.51×6.69×3.74	JDA-A□H-141709	JDA-P□H-141709	JDA-C□H-141709	1417 S	1417 P	126	155	
170×140×95	6.69×5.51×3.74	JDA-A□H-171409	JDA-P□H-171409	JDA-C□H-171409	1714 S	1714 P	126	155	
140×230×95	5.51×9.06×3.74	JDA-A□H-142309	JDA-P□H-142309	JDA-C□H-142309	1423 S	1423 P	122	212	
230×140×95	9.06×5.51×3.74	JDA-A□H-231409	JDA-P□H-231409	JDA-C□H-231409	2314 S	2314 P	122	212	
150×150×75	5.91×5.91×2.95	JDA-A□H-151507	JDA-P□H-151507	JDA-C□H-151507	1515 S	1515 P	123	123	
150×150×100	5.91×5.91×3.94	JDA-A□H-151510	JDA-P□H-151510	JDA-C□H-151510	1515 S	1515 P	123	123	
150×200×75	5.91×7.87×2.95	JDA-A□H-152007	JDA-P□H-152007	JDA-C□H-152007	1520 S	1520 P	129	179	
200×150×75	7.87×5.91×2.95	JDA-A□H-201507	JDA-P□H-201507	JDA-C□H-201507	2015 S	2015 P	129	179	
150×200×100	5.91×7.87×3.94	JDA-A□H-152010	JDA-P□H-152010	JDA-C□H-152010	1520 S	1520 P	129	179	
200×150×100	7.87×5.91×3.94	JDA-A□H-201510	JDA-P□H-201510	JDA-C□H-201510	2015 S	2015 P	129	179	
150×200×130	5.91×7.87×5.12	JDA-A□H-152013	JDA-P□H-152013	JDA-C□H-152013	1520 S	1520 P	129	179	
200×150×130	7.87×5.91×5.12	JDA-A□H-201513	JDA-P□H-201513	JDA-C□H-201513	2015 S	2015 P	129	179	
NEW 150×200×160	5.91×7.87×6.30	JDA-A□H-152016	JDA-P□H-152016	JDA-C□H-152016	2020 S	2020 P	129	179	
NEW 200×150×160	7.87×5.91×6.30	JDA-A□H-201516	JDA-P□H-201516	JDA-C□H-201516	2020 S	2020 P	129	179	
150×250×100	5.91×9.84×3.94	JDA-A□H-152510	JDA-P□H-152510	JDA-C□H-152510	1525 S	1525 P	129	224	
250×150×100	9.84×5.91×3.94	JDA-A□H-251510	JDA-P□H-251510	JDA-C□H-251510	2515 S	2515 P	129	224	
150×250×130	5.91×9.84×5.12	JDA-A□H-152513	JDA-P□H-152513	JDA-C□H-152513	1525 S	1525 P	129	224	
250×150×130	9.84×5.91×5.12	JDA-A□H-251513	JDA-P□H-251513	JDA-C□H-251513	2515 S	2515 P	129	224	
200×200×100	7.87×7.87×3.94	JDA-A□H-202010	JDA-P□H-202010	JDA-C□H-202010	2020 S	2020 P	179	179	
200×200×130	7.87×7.87×5.12	JDA-A□H-202013	JDA-P□H-202013	JDA-C□H-202013	2020 S	2020 P	179	179	
200×200×160	7.87×7.87×6.30	JDA-A□H-202016	JDA-P□H-202016	JDA-C□H-202016	2020 S	2020 P	179	179	

Accessories



■ Steel back panel (Zinc plating) ■ Plastic back panel (ABS) ■ Key ring (K40) ■ Locker(SK) ■ Plastic locker(PK) ■ Draw latch(M55) ■ Hinge(H55) ■ Stopper(M11) ■ Wall mounting bracket (B40, B50, B60) ■ Vent(V60, V80) ■ plastic bracket(PB25,20)

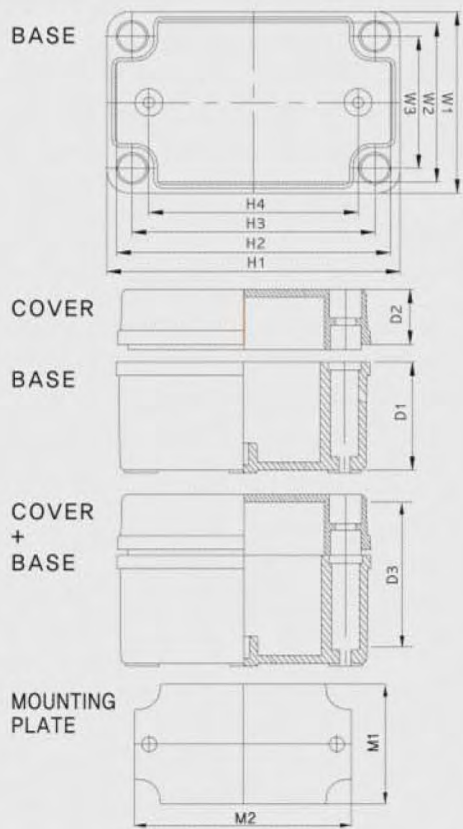
Note: Subject to change without any notice.

S Series - Medium size



The dimension of mounting plate is based on the plastic mounting plate and the dimension of around bracket is steel's mounting plate

Dimension (allowable error ±1mm)



Size	Division				H1	H2	H3	H4	D1	D2	D3
	W1	W2	W3	W4							
190×190×130	190	170	165	120	190	170	165	120	98	30	112
190×280×130	190	170	165	120	280	266	255	210	98	30	112
190×280×180	190	170	165	120	280	266	255	210	150	30	159
190×380×130	190	170	165	120	380	359	355	310	98	30	109
190×380×180	190	170	165	120	380	360	355	310	150	30	159
280×280×130	280	266	255	210	280	266	255	210	98	30	112
280×340×130	280	259	254.7	210	340	319	315	270	100	30	111
280×380×130	280	266	255	210	380	359	355	310	98	30	111
280×380×180	280	266	255	210	380	359	355	310	150	30	161.5
280×560×130	280	296	255	210	560	535	505	490	100	30	120
330×430×180	330				430				150		
380×560×180	380	366	355	310	560	535	505	490	150	30	160

Level of dustproof and waterproof	IP 66/67
Impact test	IK 07/08
Critical temperature	ABS : -40~+85 PC : -40~+120
Burn poorly	ABS : 94-HB PC/ABS : 94-V-0~5VA PC : 94-HB, 94-V-0~5VA

Note: Subject to change without any notice.

Product characteristics

1. Screw thread for connecting cover bolt of the base is inserted into the base in injection molding so that it has sufficient strength and not broken when tightening bolt.
2. It is designed as 4 side sliding type to be strong against impact.

Model and size

Model and size (cover included)		Product model			Plate Model		Plate Size	
Width×Length×Height (mm)	Width×Length×Height (inch)	ABS	PC / ABS	PC	Steel mounting plate 1.6mm	Plastic mounting plate 3~4.5mm	M1	M2
		G: Grey Cover, T: Transparent Cover	G: Grey Cover, T: Transparent Cover	G: Grey Cover, T: Transparent Cover				
190×190×130	7.48×7.48×5.12	JDA-A□S-191913	JDA-P□S-191913	JDA-C□S-191913	1919 S	1919 P	159	159
190×280×130	7.48×11.02×5.12	JDA-A□S-192813	JDA-P□S-192813	JDA-C□S-192813	1928 S	1928 P	159	248
NEW 190×280×180	7.48×11.02×7.09	JDA-A□S-192818	JDA-P□S-192818	JDA-C□S-192818	1928 S	1928 P	159	248
190×380×130	7.48×14.96×5.12	JDA-A□S-193813	JDA-P□S-193813	JDA-C□S-193813	1938 S	1938 P	159	348
NEW 190×380×180	7.48×14.96×7.09	JDA-A□S-193818	JDA-P□S-193818	JDA-C□S-193818	1938 S	1938 P	159	348
280×280×130	11.02×11.02×5.12	JDA-A□S-282813	JDA-P□S-282813	JDA-C□S-282813	2828 S	2828 P	248	248
280×340×130	11.02×13.39×5.12	JDA-A□S-283413	JDA-P□S-283413	JDA-C□S-283413	2834 S	2834 P	248	308
280×380×130	11.02×14.96×5.12	JDA-A□S-283813	JDA-P□S-283813	JDA-C□S-283813	2838 S	2838 P	248	348
280×380×180	11.02×14.96×7.09	JDA-A□S-283818	JDA-P□S-283818	JDA-C□S-283818	2838 S	2838 P	248	348
280×560×130	11.02×22.05×5.12	JDA-A□S-285613	JDA-P□S-285613	JDA-C□S-285613	2856 S		(232)	(535)
NEW 330×430×180	12.99×16.93×7.09	JDA-A□S-334318	JDA-P□S-334318	JDA-C□S-334318	3343 S	3343 P	(295)	(395)
380×560×180	14.96×22.05×7.09	JDA-A□S-385618	JDA-P□S-385618	JDA-C□S-385618	3856 S		(345)	(535)

Accessories



■ Steel back panel (Zinc plating) ■ Plastic back panel (ABS)



■ Cover bolt (standard provide) (CB28-) ■ Cover bolt (optional) (CB28+)



■ Wall mounting bracket (B50)



■ Vent (V60, V80) ■ plastic bracket (PB25)



Note: Subject to change without any notice.

S Series - Small size



The dimension of mounting plate is based on the plastic mounting plate and the dimension of around bracket is steel's mounting plate

Dimension (allowable error ±1mm)

	Diagram	Division										
		Size	W1	W2	W3	H1	H2	H3	H4	D1	D2	D3
BASE		50 × 65 × 45	50	44	37	65	59	52	40	30	15	29.5
		50 × 65 × 55	50	44	37	65	59	52	40	40	15	39.5
		65 × 95 × 55	65	59	47	95	89	77	65	40	15	39.5
		75 × 105 × 55	75	69	57	105	99	87	75	40	15	39.5
		80 × 80 × 60	80	74	62	80	94	62	50	45	15	43
		80 × 110 × 45	80	74	62	110	104	92	80	25	20	28
		80 × 110 × 70	80	74	62	110	104	92	80	50	20	53
		80 × 110 × 85	80	74	62	110	104	92	80	50	35	68
		80 × 130 × 70	80	74	62	130	124	112	100	50	20	53
		80 × 130 × 85	80	74	62	130	124	112	100	50	35	68
COVER		80 × 160 × 55	82	76	68	162	156	148	137	40	15	38
		80 × 160 × 85	82	76	68	162	156	148	137	70	15	68
BASE		80 × 180 × 70	80	74	62	180	174	162	150	50	20	53
		80 × 180 × 85	80	74	62	180	174	162	150	50	35	68
COVER		80 × 250 × 70	80	74	62	250	244	232	220	50	20	52
		80 × 250 × 85	80	74	62	250	244	232	220	50	35	67
COVER + BASE		100 × 100 × 75	100	94	82	100	94	82	60	55	20	58
		100 × 100 × 100	100	94	82	100	94	82	60	80	20	83
COVER + BASE		100 × 185 × 70	100	94	82	185	179	167	139	55	15	53
		100 × 200 × 70	100	94	82	200	194	182	158	55	15	53
COVER + BASE		100 × 230 × 70	100	94	82	230	224	212	184	55	15	53
		125 × 125 × 75	125	119	105	125	119	105	70	55	20	58
COVER + BASE		125 × 125 × 100	125	119	105	125	119	105	70	80	20	83
		125 × 175 × 75	125	121	109	175	169	157	140	50	25	58
COVER + BASE		125 × 175 × 100	125	121	109	175	169	157	140	50	50	83
		140 × 170 × 95	140	137	122	173	167	152	130	75	20	77
COVER + BASE		140 × 230 × 95	140	134	122	230	224	212	190	75	20	77
		150 × 150 × 75	150	144	110	150	144	132	110	55	20	58
COVER + BASE		150 × 150 × 100	150	144	110	150	144	132	110	80	20	83
		150 × 200 × 75	150	142	132	200	192	182	160	55	20	58
COVER + BASE		150 × 200 × 100	150	142	132	200	192	182	160	80	20	83
		150 × 200 × 130	150	142	132	200	192	182	160	110	20	111
COVER + BASE		150 × 200 × 160	150	142	132	200	192	182	160	110	50	149
		150 × 250 × 100	150	142	132	250	242	232	210	80	20	83
COVER + BASE		150 × 250 × 130	150	142	132	250	242	232	210	80	50	113
		160 × 160 × 70	160	154	110	160	154	142	110	55	15	53
COVER + BASE		200 × 200 × 100	200	193	132	200	193	182	120	80	20	82
		200 × 200 × 130	200	193	132	200	193	182	120	110	20	111
COVER + BASE		200 × 200 × 160	200	193	132	200	193	182	120	110	50	141

Note: Subject to change without any notice.

Product characteristics

1. Screw thread for connecting cover bolt of the base is inserted into the base in injection molding so that it has sufficient strength and not bracken when tightening bolt.
2. It can be used semi-permanently as we reinforced thickness.

Model and size

Model and size (cover included)		Product model			Plate Model		Plate Size	
Width×Length×Height (mm)	Width×Length×Height (inch)	ABS	PC / ABS	PC	Steel mounting plate 1.6mm	Plastic mounting plate 3~4.5mm	M1	M2
		G: Grey Cover, T: Transparent Cover	G: Grey Cover, T: Transparent Cover	G: Grey Cover, T: Transparent Cover				
50 × 65 × 45	1.97 × 2.56 × 1.77	JDA-A□S-050604	JDA-P□S-050604	JDA-C□S-050604	0506 S		(52)	(38)
50 × 65 × 55	1.97 × 2.56 × 2.17	JDA-A□S-050605	JDA-P□S-050605	JDA-C□S-050605	0506 S		(52)	(38)
65 × 95 × 55	2.56 × 3.74 × 2.17	JDA-A□S-060905	JDA-P□S-060905	JDA-C□S-060905	0609 S		(50)	(80)
75 × 105 × 55	2.95 × 4.13 × 2.17	JDA-A□S-071005	JDA-P□S-071005	JDA-C□S-071005	0710 S		(60)	(90)
80 × 80 × 60	3.15 × 3.15 × 2.36	JDA-A□S-080806	JDA-P□S-080806	JDA-C□S-080806	0808 S		(65)	(65)
80 × 110 × 45	3.15 × 4.33 × 1.77	JDA-A□S-081104	JDA-P□S-081104	JDA-C□S-081104	0811 S	0811 P	65	95
80 × 110 × 70	3.15 × 4.33 × 2.76	JDA-A□S-081107	JDA-P□S-081107	JDA-C□S-081107	0811 S	0811 P	65	95
80 × 110 × 85	3.15 × 4.33 × 3.35	JDA-A□S-081108	JDA-P□S-081108	JDA-C□S-081108	0811 S	0811 P	65	95
80 × 130 × 70	3.15 × 5.12 × 2.76	JDA-A□S-081307	JDA-P□S-081307	JDA-C□S-081307	0813 S	0813 P	65	115
80 × 130 × 85	3.15 × 5.12 × 3.35	JDA-A□S-081308	JDA-P□S-081308	JDA-C□S-081308	0813 S	0813 P	65	115
80 × 160 × 55	3.15 × 6.30 × 2.17	JDA-A□S-081605	JDA-P□S-081605	JDA-C□S-081605	0816 S	0816 P	65	152
80 × 160 × 85	3.15 × 6.30 × 3.35	JDA-A□S-081608	JDA-P□S-081608	JDA-C□S-081608	0816 S	0816 P	65	152
80 × 180 × 70	3.15 × 7.09 × 2.76	JDA-A□S-081807	JDA-P□S-081807	JDA-C□S-081807	0818 S	0818 P	65	165
80 × 180 × 85	3.15 × 7.09 × 3.35	JDA-A□S-081808	JDA-P□S-081808	JDA-C□S-081808	0818 S	0818 P	65	165
80 × 250 × 70	3.15 × 9.84 × 2.76	JDA-A□S-082507	JDA-P□S-082507	JDA-C□S-082507	0825 S	0825 P	65	235
80 × 250 × 85	3.15 × 9.84 × 3.35	JDA-A□S-082508	JDA-P□S-082508	JDA-C□S-082508	0825 S	0825 P	65	235
100 × 100 × 75	3.94 × 3.94 × 2.95	JDA-A□S-101007	JDA-P□S-101007	JDA-C□S-101007	1010 S	1010 P	88	89
100 × 100 × 100	3.94 × 3.94 × 3.94	JDA-A□S-101010	JDA-P□S-101010	JDA-C□S-101010	1010 S	1010 P	88	89
100 × 185 × 70	3.94 × 7.28 × 2.76	JDA-A□S-101807	JDA-P□S-101807	JDA-C□S-101807	1018 S	1018 P	(88)	(174)
100 × 200 × 70	3.94 × 7.87 × 2.76	JDA-A□S-102007	JDA-P□S-102007	JDA-C□S-102007	1020 S		(88)	(189)
100 × 230 × 70	3.94 × 9.06 × 2.76	JDA-A□S-102307	JDA-P□S-102307	JDA-C□S-102307	1023 S		(88)	(219)
125 × 125 × 75	4.92 × 4.92 × 2.95	JDA-A□S-121207	JDA-P□S-121207	JDA-C□S-121207	1212 S	1212 P	101	102
125 × 125 × 100	4.92 × 4.92 × 3.94	JDA-A□S-121210	JDA-P□S-121210	JDA-C□S-121210	1212 S	1212 P	101	102
125 × 175 × 75	4.92 × 6.89 × 2.95	JDA-A□S-121707	JDA-P□S-121707	JDA-C□S-121707	1217 S	1217 P	101	156
125 × 175 × 100	4.92 × 6.89 × 3.94	JDA-A□S-121710	JDA-P□S-121710	JDA-C□S-121710	1217 S	1217 P	101	156
140 × 170 × 95	5.51 × 6.69 × 3.74	JDA-A□S-141709	JDA-P□S-141709	JDA-C□S-141709	1417 S	1417 P	122	154
140 × 230 × 95	5.51 × 9.06 × 3.74	JDA-A□S-142309	JDA-P□S-142309	JDA-C□S-142309	1423 S	1423 P	122	211
150 × 150 × 75	5.91 × 5.91 × 2.95	JDA-A□S-151507	JDA-P□S-151507	JDA-C□S-151507	1515 S	1515 P	134	134
150 × 150 × 100	5.91 × 5.91 × 3.94	JDA-A□S-151510	JDA-P□S-151510	JDA-C□S-151510	1515 S	1515 P	134	134
150 × 200 × 75	5.91 × 7.87 × 2.95	JDA-A□S-152007	JDA-P□S-152007	JDA-C□S-152007	1520 S	1520 P	136	186
150 × 200 × 100	5.91 × 7.87 × 3.94	JDA-A□S-152010	JDA-P□S-152010	JDA-C□S-152010	1520 S	1520 P	136	186
150 × 200 × 130	5.91 × 7.87 × 5.12	JDA-A□S-152013	JDA-P□S-152013	JDA-C□S-152013	1520 S	1520 P	129	179
NEW 150 × 200 × 160	5.91 × 7.87 × 6.30	JDA-A□S-152016	JDA-P□S-152016	JDA-C□S-152016	2020 S	2020 P	129	179
150 × 250 × 100	5.91 × 9.84 × 3.94	JDA-A□S-152510	JDA-P□S-152510	JDA-C□S-152510	1525 S	1525 P	136	235
150 × 250 × 130	5.91 × 9.84 × 5.12	JDA-A□S-152513	JDA-P□S-152513	JDA-C□S-152513	1525 S	1525 P	136	235
160 × 160 × 70	6.30 × 6.30 × 2.76	JDA-A□S-161607	JDA-P□S-161607	JDA-C□S-161607	1616 S		134	134
200 × 200 × 100	7.87 × 7.87 × 3.94	JDA-A□S-202010	JDA-P□S-202010	JDA-C□S-202010	2020 S	2020 P	187	187
200 × 200 × 130	7.87 × 7.87 × 5.12	JDA-A□S-202013	JDA-P□S-202013	JDA-C□S-202013	2020 S	2020 P	187	187
200 × 200 × 160	7.87 × 7.87 × 6.30	JDA-A□S-202016	JDA-P□S-202016	JDA-C□S-202016	2020 S	2020 P	187	187

Accessories



- Steel back panel (Zinc plating)
- Plastic back panel (ABS)
- Cover bolt (optional) (CB20-)
- Cover bolt (standard provide) (CB20)
- Cover bolt (standard provide) (CB35)
- Cover bolt (standard provide) (CB50)
- Wall mounting bracket (B40)
- plastic bracket (PB25,20)

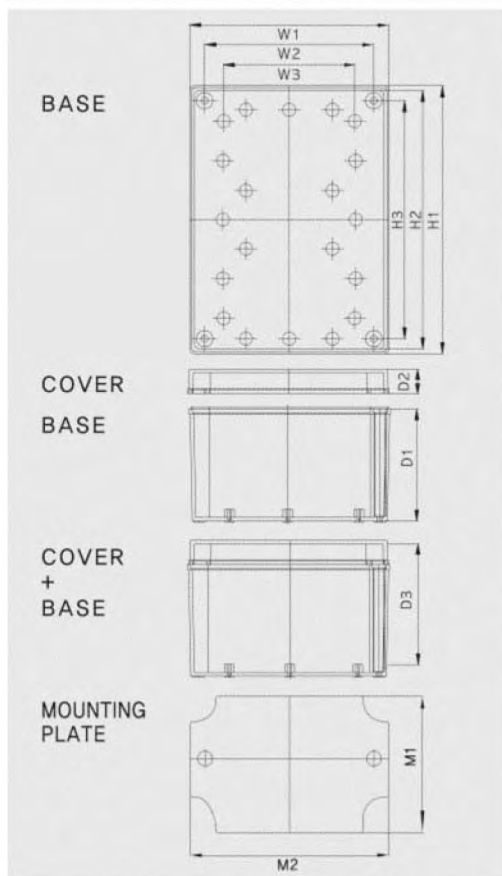
Note: Subject to change without any notice.

M Series



The dimension of mounting plate is based on the plastic mounting plate and the dimension of around bracket is steel's mounting plate

Dimension (allowable error ±1mm)



Size	Division			H1	H2	H3	D1	D2	D3
	W1	W2	W3						
80 × 130 × 35	80	62	40	130	112	90	25	10	21.5
80 × 130 × 60	80	62	40	130	112	90	50	10	46.5
80 × 130 × 75	80	62	40	130	112	90	65	10	61.5
80 × 130 × 85	80	62	40	130	112	90	50	35	71.5
80 × 130 × 100	80	62	40	130	112	90	90	10	87.5
80 × 130 × 125	80	112	40	130	112	90	90	35	111.5
130 × 130 × 35	130	112	90	130	112	90	25	10	21.5
130 × 130 × 60	130	112	90	130	112	90	50	10	46.5
130 × 180 × 35	130	112	90	180	162	140	25	10	21.5
130 × 180 × 60	130	132	90	180	162	140	50	10	46.5
150 × 180 × 60	150	162	110.5	180	162	140	50	10	45.5
180 × 180 × 60	180	162	140	180	162	140	50	10	45.5
180 × 180 × 75	180	162	140	180	162	140	65	10	59.5
180 × 180 × 100	180	162	140	180	162	140	90	10	84.5
180 × 180 × 125	180	162	140	180	162	140	115	10	109.5
180 × 255 × 75	180	162	140	255	237	201.5	60	15	59.5
180 × 255 × 100	180	162	140	255	237	201.5	85	15	84.5
180 × 255 × 125	180	162	140	255	237	201.5	110	15	109.5

Level of dustproof and waterproof	IP 66/67
Impact test	IK 07/08
Critical temperature	ABS : -40~+85 PC : -40~+120
Burn poorly	ABS : 94-HB PC/ABS : 94-V-0~5VA PC : 94-HB, 94-V-0~5VA

Note: Subject to change without any notice.

Product characteristics

1. Considering attachment of membrane keyboard, this M type Box is designed to make center surface of the cover slightly lower.
2. Screw thread for connecting cover bolt of the base is inserted into the base in injection molding so that it has sufficient strength and not broken when tightening bolt.
3. Cover is low and base is high so that it has refined and stable appearance.

Model and size

Model and size (cover included)		Product model			Plate Model		Plate Size	
Width×Length×Height (mm)	Width×Length×Height (inch)	ABS	PC / ABS	PC	Steel mounting plate 1.6mm	Plastic mounting plate 3~4.5mm	M1	M2
		G: Grey Cover, T: Transparent Cover	G: Grey Cover, T: Transparent Cover	G: Grey Cover, T: Transparent Cover				
80×130×35	3.15×5.12×1.38	JDA-A□M-081303	JDA-P□M-081303	JDA-C□M-081303	0813 S	0813 P	(49)	(98)
80×130×60	3.15×5.12×2.36	JDA-A□M-081306	JDA-P□M-081306	JDA-C□M-081306	0813 S	0813 P	(49)	(98)
80×130×75	3.15×5.12×2.95	JDA-A□M-081307	JDA-P□M-081307	JDA-C□M-081307	0813 S	0813 P	(49)	(98)
80×130×85	3.15×5.12×3.35	JDA-A□M-081308	JDA-P□M-081308	JDA-C□M-081308	0813 S	0813 P	(49)	(98)
80×130×100	3.15×5.12×3.94	JDA-A□M-081310	JDA-P□M-081310	JDA-C□M-081310	0813 S	0813 P	(49)	(98)
80×130×125	3.15×5.12×4.92	JDA-A□M-081312	JDA-P□M-081312	JDA-C□M-081312	0813 S	0813 P	(49)	(98)
130×130×35	5.12×5.12×1.38	JDA-A□M-131303	JDA-P□M-131303	JDA-C□M-131303	1313 S	1313 P	(98)	(98)
130×130×60	5.12×5.12×2.36	JDA-A□M-131306	JDA-P□M-131306	JDA-C□M-131306	1313 S	1313 S	(98)	(98)
130×180×35	5.12×7.09×1.38	JDA-A□M-131803	JDA-P□M-131803	JDA-C□M-131803	1318 S	1318 P	113	161
130×180×60	5.12×7.09×2.36	JDA-A□M-131806	JDA-P□M-131806	JDA-C□M-131806	1318 S	1318 P	113	161
150×180×60	5.91×7.09×2.36	JDA-A□M-151806	JDA-P□M-151806	JDA-C□M-151806	1518 S		(123)	(161)
180×180×60	7.09×7.09×2.36	JDA-C□M-181806	JDA-P□M-181806	JDA-C□M-181806	1818 S	1818 P	(148)	(148)
180×180×75	7.09×7.09×2.95	JDA-A□M-181807	JDA-P□M-181807	JDA-C□M-181807	1818 S	1818 P	(148)	(148)
180×180×100	7.09×7.09×3.94	JDA-A□M-181810	JDA-P□M-181810	JDA-C□M-181810	1818 S	1818 P	(148)	(148)
180×180×125	7.09×7.09×4.92	JDA-A□M-181812	JDA-P□M-181812	JDA-C□M-181812	1818 S	1818 P	(148)	(148)
180×255×75	7.09×10.04×2.95	JDA-A□M-182507	JDA-P□M-182507	JDA-C□M-182507	1825 S		(148)	(223)
180×255×100	7.09×10.04×3.94	JDA-A□M-182510	JDA-P□M-182510	JDA-C□M-182510	1825 S		(148)	(223)
180×255×125	7.09×10.04×4.92	JDA-A□M-182512	JDA-P□M-182512	JDA-C□M-182512	1825 S		(148)	(223)

Accessories



■ Steel back panel
(Zinc plating)

■ Cover bolt (standard provide) (CB10)

■ Cover bolt (optional) (CB20-)

■ Cover bolt (standard provide) (CB20)

■ Wall mounting bracket (B40)

■ plastic bracket (PB20)



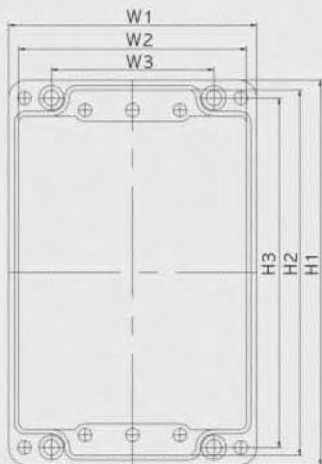
Note: Subject to change without any notice.

Aluminium Die Casting Box



Dimension (allowable error ±1mm)

BASE



COVER



BASE



Level of dustproof
and waterproof

IP 67, IK 10

Size	Division	W1	W2	W3	H1	H2	H3	D1	D2
64 × 98 × 34		68	57.8	36	98	91.8	86	25	9
80 × 75 × 57		80	72	52	75	67	63	42	15
80 × 125 × 57		80	72	52	125	117	113	42	15
80 × 175 × 57		80	72	52	175	167	16	42	15
80 × 250 × 57		80	72	52	250	242	238	42	15
100 × 100 × 80		100	92	66	100	92	86	61	20
100 × 160 × 80		100	92	66	160	152	146	61	20
120 × 122 × 80		120	111	82	122	113	106	61	20
120 × 220 × 80		120	111	82	220	211	204	61	20
120 × 220 × 90		120	111	82	220	211	204	61	30
150 × 132 × 90		150	121	92	132	144	138	70	20
160 × 160 × 90		160	151	110	160	151	140	71	20
160 × 260 × 90		160	151	110	260	251	240	71	20
180 × 180 × 100		180	171	130	180	171	160	71	30
230 × 200 × 110		230	230	140	200	193	150	91	20

Model and size

Model and size (cover included)				Plate Model
Width×Length× Height(Unit:mm)	Width×Length× Height(Unit:inch)	Aluminium Box	Plate Size	
NEW 64 × 98 × 34	2.52 × 3.86 × 1.34	JDA-AL-061003	6010A	
NEW 80 × 75 × 57	3.15 × 2.95 × 2.24	JDA-AL-080806	0808A	
NEW 80 × 125 × 57	3.15 × 5.00 × 2.24	JDA-AL-081306	0813A	
NEW 80 × 175 × 57	3.15 × 6.89 × 2.24	JDA-AL-081806	0818A	
NEW 80 × 250 × 57	3.15 × 9.84 × 2.24	JDA-AL-082506	0825A	
NEW 100 × 100 × 80	3.94 × 3.94 × 3.15	JDA-AL-101008	1010A	
NEW 100 × 160 × 80	3.94 × 7.87 × 3.15	JDA-AL-101608	1016A	
NEW 120 × 122 × 80	4.72 × 4.80 × 3.15	JDA-AL-121208	1212A	
NEW 120 × 220 × 80	4.72 × 8.66 × 3.15	JDA-AL-122208	1222A	
NEW 120 × 220 × 90	4.72 × 8.66 × 3.54	JDA-AL-122209	1222A	
NEW 150 × 132 × 90	5.90 × 5.19 × 3.54	JDA-AL-151309	1513A	
NEW 160 × 160 × 90	6.30 × 6.30 × 3.54	JDA-AL-161609	1616A	
NEW 160 × 260 × 90	6.30 × 10.24 × 3.54	JDA-AL-162609	1626PL	
NEW 180 × 180 × 100	7.09 × 7.09 × 3.94	JDA-AL-181810	1818A	
NEW 230 × 200 × 110	9.06 × 7.87 × 4.33	JDA-AL-232011	2320PL	

Note: Subject to change without any notice.

Dual door



Assembly of Dual door kits



Product characteristics

1. Dual door is easy to open or close as it will be assembled with handle and hinge type.
2. It is very strong as it is fixed with 4 supports and it has good external appearance.

Model and size

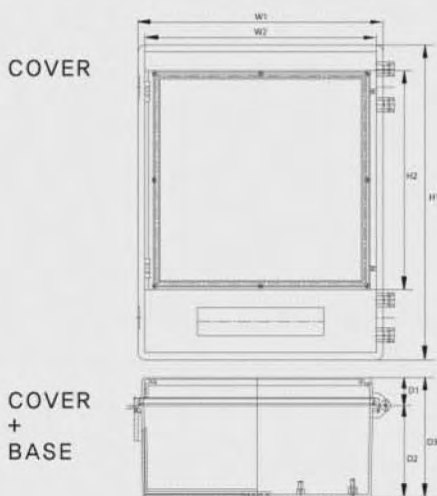
Swing Frame applicable model		Product model		Swing Frame applicable model		Product model	
Size	Model	Dual door (Frame, support, hinge, handle included)	Dual door mounting plate (Aluminium)	Size	Model	Dual door (Frame, support, hinge, handle included)	Dual door mounting plate (Aluminium)
WidthXLengthXHeight (mm)				WidthXLengthXHeight (mm)			
200 × 300 × 130	JDA-□□P-203013	JDA-F203013	JDA-FA2030	300 × 400 × 180	JDA-□□P-304018	JDA-F304018	JDA-FA3040
200 × 300 × 150	JDA-□□P-203015	JDA-F203015	JDA-FA2030	350 × 450 × 160	JDA-□□P-354516	JDA-F354516	JDA-FA3545
200 × 300 × 180	JDA-□□P-203018	JDA-F203018	JDA-FA2030	350 × 450 × 200	JDA-□□P-354520	JDA-F354520	JDA-FA3545
250 × 350 × 150	JDA-□□P-253515	JDA-F253515	JDA-FA2535	400 × 500 × 160	JDA-□□P-405016	JDA-F405016	JDA-FA4050
250 × 350 × 180	JDA-□□P-253518	JDA-F253518	JDA-FA2535	400 × 500 × 200	JDA-□□H-405020	JDA-F405020	JDA-FA4050
280 × 280 × 130	JDA-□□P-282813	JDA-F282813	JDA-FA2828	NEW 400 × 500 × 200	JDA-□□P-405020	JDA-F405020	JDA-FA4050
280 × 380 × 130	JDA-□□P-283813	JDA-F283813	JDA-FA2838	400 × 600 × 180	JDA-□□H-406018	JDA-F406018	JDA-FA4060
300 × 300 × 150	JDA-□□P-303015	JDA-F303015	JDA-FA3030	NEW 400 × 600 × 180	JDA-□□P-406018	JDA-F406018	JDA-FA4060
300 × 300 × 180	JDA-□□P-303018	JDA-F303018	JDA-FA3030	NEW 400 × 600 × 230	JDA-□□P-406023	JDA-F406023	JDA-FA4060
300 × 400 × 150	JDA-□□P-304015	JDA-F304015	JDA-FA3040	NEW 530 × 630 × 185	JDA-□□P-506018	JDA-F506018	JDA-FA5060
				NEW 530 × 630 × 255	JDA-□□P-506025	JDA-F506025	JDA-FA5060

Note: Subject to change without any notice.

All-in-one Dual door



Dimension (allowable error ±1mm)



Product characteristics

1. It is designed to prevent the penetration of rain or dust perfectly double as roof is protruded from top and bottom of the base.
2. It is easy to separate cover and base so that user can attach or detach them for processing and printing.
3. It is possible to reduce Product price and assembly cost from integrated cover and transparent window
4. Insert hinge into the product and hinge connecting pin and important parts of draw latch are made of stainless steel so that it is very strong and corrosion resistant.

Model and size

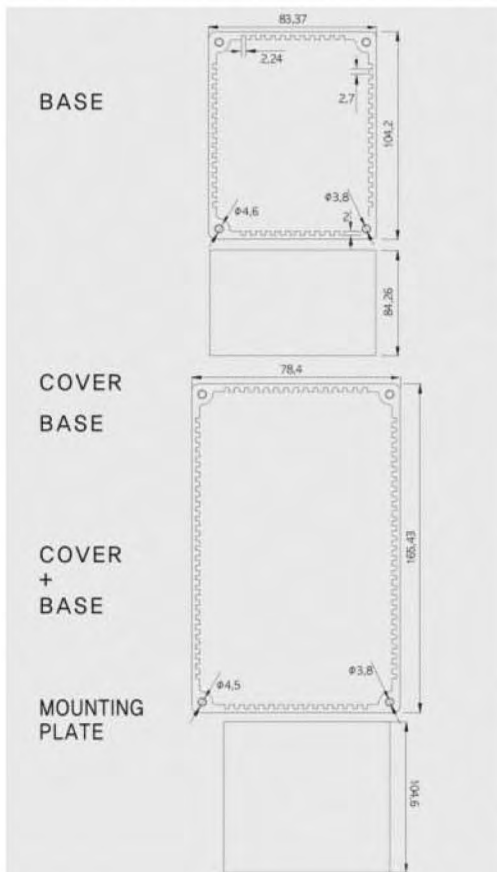
Model and size (cover included)		Product model			Plate Size	Dual door size
Width×Length×Height (mm)	Width×Length×Height (inch)	ABS G: Grey Cover, T: Transparent Cover	PC / ABS G: Grey Cover, T: Transparent Cover	PC G: Grey Cover, T: Transparent Cover	Mounting Plate size	Dual door Plate size
NEW 250 × 350 × 160	9.84 × 13.77 × 6.29	JDA-AGD-253516	JDA-PGD-253516	JDA-CGD-253516	216 × 316(MM)	220 × 220(MM)
NEW 250 × 350 × 190	9.84 × 13.77 × 7.48	JDA-AGD-253519	JDA-PGD-253519	JDA-CGD-253519	216 × 316(MM)	220 × 220(MM)
NEW 350 × 450 × 130	13.77 × 17.11 × 5.11	JDA-AGD-354513	JDA-PGD-354513	JDA-CGD-354513	306 × 407(MM)	314 × 313(MM)
NEW 350 × 450 × 170	13.77 × 17.71 × 6.69	JDA-AGD-354517	JDA-PGD-354517	JDA-CGD-354517	306 × 407(MM)	314 × 313(MM)
NEW 350 × 450 × 210	13.77 × 17.71 × 8.26	JDA-AGD-354521	JDA-PGD-354521	JDA-CGD-354521	306 × 407(MM)	314 × 313(MM)

Note: Subject to change without any notice.

JDA aluminium housing for inserting card



Dimension (allowable error ±1mm)



Product characteristics

1. Built-in guide slot for inserting PCB
2. Optional extension to length of the profile.
3. Aluminium SBGL is suitable for highly corrosive environment (Custom)
4. Optional EMC-version for Electromagnetic shielding (Custom)

Model and size

Model and size (cover included)		Product model
Width×Length×Height(Unit:mm)	Width×Length×Height(Unit:inch)	Aluminium
NEW 111.5×166×91.5	4.39×6.53×3.6	JDA-ALC-111609
NEW 173×206×113	6.81×8.11×4.44	JDA-ALC-172011

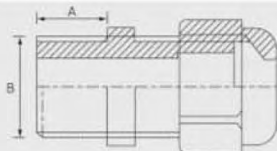
Note: Subject to change without any notice.

Cable Glands - PG Series

JDA-PG CABLE GLAND



BASE



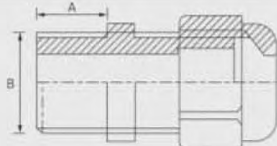
Model and size

Model No.			Size Cable ϕ mm	A (mm)	B (mm)
Gray	Dark Gray	Black			
JDA-PG 7 -G	JDA-PG 7 -D	JDA-PG 7 -B	3 ~ 6	8	12.5
JDA-PG 9 -G	JDA-PG 9 -D	JDA-PG 9 -B	4 ~ 8	8	15.2
JDA-PG 11 -G	JDA-PG 11 -D	JDA-PG 11 -B	5 ~ 10	8	18.6
JDA-PG 13.5-G	JDA-PG 13.5-D	JDA-PG 13.5-B	6 ~ 12	9	20.4
JDA-PG 16 -G	JDA-PG 16 -D	JDA-PG 16 -B	10 ~ 14	10	22.5
JDA-PG 19 -G	JDA-PG 19 -D	JDA-PG 19 -B	12 ~ 15	10	23.5
JDA-PG 21 -G	JDA-PG 21 -D	JDA-PG 21 -B	13 ~ 18	10	28.3
JDA-PG 25 -G	JDA-PG 25 -D	JDA-PG 25 -B	15 ~ 19	11	29.5
JDA-PG 29 -G	JDA-PG 29 -D	JDA-PG 29 -B	18 ~ 25	12	37
JDA-PG 36 -G	JDA-PG 36 -D	JDA-PG 36 -B	22 ~ 32	13.5	47
JDA-PG 42 -G	JDA-PG 42 -D	JDA-PG 42 -B	30 ~ 38	14.5	54
JDA-PG 48 -G	JDA-PG 48 -D	JDA-PG 48 -B	34 ~ 44	14	59
JDA-PG 63 -G	JDA-PG 63 -D	JDA-PG 63 -B	42 ~ 50	27	70

JDA-PG-L LONG CABLE GLAND



BASE



Model and size

Model No.	Size Cable (ϕ mm)	A (mm)	B (mm)
NEW JDA-PG 7L -G	3.5 ~ 6	15	12
NEW JDA-PG 9L -G	4 ~ 8	15	16
NEW JDA-PG 11L -G	5 ~ 10	15	18
NEW JDA-PG 13.5L -G	6 ~ 12	15	20
NEW JDA-PG 16L -G	10 ~ 14	15	22

Product characteristics

- Material : Nylon plastic
- Hermetic seal : Nitrile rubber
- IP rating : IP66
- Ambient temperature : -20°C ~ 65°C
- Supply color : Grey

JDA-BP-PG BEND PROOF CABLE GLAND



BASE



Model and size

Article no.	Cable Range (mm)	A (mm)	Panel Mounting Hole
JDA-BP-PG 7	3 ~ 5.5	12.5	12.5 ~ 12.8
JDA-BP-PG 9	4 ~ 8	15.2	15.2 ~ 15.5
JDA-BP-PG 11	5 ~ 10	18.6	18.6 ~ 18.9
JDA-BP-PG 13.5	6 ~ 12.5	20.4	20.4 ~ 20.7
JDA-BP-PG 16	8.5 ~ 14	22.5	22.5 ~ 22.8
JDA-BP-PG 21	12.5 ~ 18	28.3	28.3 ~ 28.7

Product characteristics

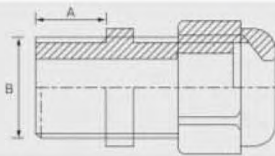
- Material : Nylon plastic
- Hermetic seal : Nitrile rubber
- Ambient temperature : quiescent state -40°C to 100°C, short time to 120°C, dynamic -20°C to 80°C, short time to 100°C
- Supply color : Grey

Note: Subject to change without any notice.

JDA-MPG METAL CABLE GLAND



BASE



Model and size

Article no.	Thread Dimension	Clamping range (mm)	A (mm)	B (mm)	Wrench size (mm)
JDA-MPG 7	PG 7	3 ~ 6.5	5	12.5	14
JDA-MPG 9	PG 9	4 ~ 8	6	15.2	17
JDA-MPG11	PG11	5 ~ 10	6	18.6	20
JDA-MPG13	PG13.5	6 ~ 12	7	20.4	22
JDA-MPG16	PG16	8 ~ 14	7	22.5	24
JDA-MPG21	PG21	13 ~ 18	8	28.3	30
JDA-MPG29	PG29	18 ~ 25	8	37	40
JDA-MPG36	PG36	22 ~ 32	9	47	50
JDA-MPG42	PG42	30 ~ 38	9	54	60
JDA-MPG48	PG48	37 ~ 44	10	59.3	65

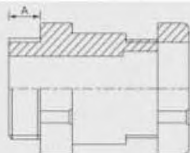
Product characteristics

- Material : Body : nickel-plated brass Seal : Polyamide 66, Sealing : NBR
- Protection degree : Within the clamping range, its protection degree can reach IP68.
- Properties : succeed in the experiment of IEC-60077-1999 resistance to vibration and impact.
- Temperature Range : Stat.:Min-40°C, Max 100°C, Short-term 120°C
Dyn.:Min-20°C, Max 80°C, Short-term 100°C

JDA-PKM-P PKM METAL CABLE GLAND



BASE



Model and size

Article no.	Thread Dimension	Clamping range (mm)	A (mm)	Wrench size (mm)
JDA-PKM-P7	PG 7	6 ~ 8	5	15
JDA-PKM-P9	PG 9	8 ~ 10	6	17
JDA-PKM-P11	PG11	10 ~ 12	6	22
JDA-PKM-P13	PG13.5	12 ~ 14	7	24

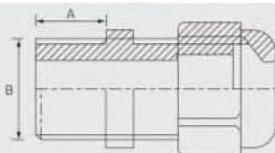
Product characteristics

- Material : Body:nickel-plated brass Sealing:NBR
- Protection degree : Within the clamping range, its protection degree can reach IP65

JDA-HSK-EX-P EX PLASTIC CABLE GLAND



BASE



Model and size

Article no.	Clamping range (mm)	A (mm)	B (mm)	Wrench size (mm)
JDA-HSK-EX-P 7	3 ~ 6.5	8	12.5	15
JDA-HSK-EX-P 9	4 ~ 8	8	15.2	19
JDA-HSK-EX-P11	5 ~ 10	8	18.6	22
JDA-HSK-EX-P13	6 ~ 12	9	20.4	24
JDA-HSK-EX-P16	8 ~ 14	10	22.5	27
JDA-HSK-EX-P21	13 ~ 18	11	28.3	33
JDA-HSK-EX-P29	18 ~ 25	11	37	42
JDA-HSK-EX-P36	22 ~ 32	13	47	52
JDA-HSK-EX-P42	30 ~ 38	14	54	60
JDA-HSK-EX-P48	37 ~ 44	15	59.3	65

Product characteristics

- Material : Polyamide 66, sealing : NBR
- Color : Grey white(RAL 7035), Black (RAL 9005)
- Protection degree : Using suitable O-sealings within the clamping range, its protection degree can reach IP68
- Temperature Range : Stat.:Min-40°C, Max 100°C, Short-term 120°C
Dyn.:Min-20°C, Max 80°C, Short-term 100°C
- Properties : V2(94), free of halogen, phosphor and cadmium, passed RoHS UV-resistance, ageing-resistance certificates
- EX degree : Exe II T5 Certificate No.: CNEx07.031IU

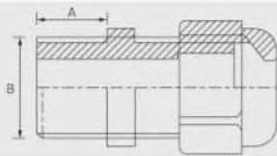
Note: Subject to change without any notice.

Cable Glands - PG Series

JDA-HSM-EX-P EX METAL CABLE GLAND



BASE



Model and size

Article no.	Thread Dimension	Clamping range (mm)	A (mm)	B (mm)	Wrench size (mm)
JDA-HSM-EX-P 7	PG 7	3 ~ 6.5	5	12.5	14
JDA-HSM-EX-P 9	PG 9	4 ~ 8	6	15.2	17
JDA-HSM-EX-P11	PG11	5 ~ 10	6	18.6	20
JDA-HSM-EX-P13	PG13.5	6 ~ 12	7	20.4	22
JDA-HSM-EX-P16	PG16	8 ~ 14	7	22.5	24
JDA-HSM-EX-P21	PG21	13 ~ 18	8	28.3	30
JDA-HSM-EX-P29	PG29	18 ~ 25	8	37	40
JDA-HSM-EX-P36	PG36	22 ~ 32	9	47	50
JDA-HSM-EX-P42	PG42	30 ~ 38	9	54	60
JDA-HSM-EX-P48	PG48	37 ~ 44	10	59.3	65

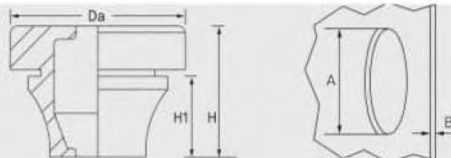
Product characteristics

- Material : Body : nickel-plated brass Seal : Polyamide 66, Sealing : NBR
- Protection degree : Within the clamping range, its protection degree can reach IP68.
- Properties : succeed in the experiment of IEC-60077-1999 resistance to vibration and impact.
- Temperature Range : Stat.:Min-40°C, Max 100°C, Short-term 120°C
Dyn.:Min-20°C, Max 80°C, Short-term 100°C
- Ex degree : Exe II T5 Certificate No : CNE07,03126

JDA-RG-PG RUBBER GROMMET PG



BASE



Model and size

Article no.	Thread AD(mm)	Φmm (cable)	A (mm)	B (mm)	Da (mm)	H (mm)	H1 (mm)
JDA-RG-PG 7	12.5	3~ 5	13	0.5~2	20	12.6	5.4
JDA-RG-PG 9	15.2	5~ 7	16	1~ 4	21	17.8	10.3
JDA-RG-PG11	18.6	7~10	19	1~ 4	24	19.8	12.7
JDA-RG-PG16	22.5	10~14	23	1~ 4	28	21.6	14.7
JDA-RG-PG21	28.3	14~20	29	1~ 4	35	24.6	17.6
JDA-RG-PG29	37	20~26	38	1~ 4	46	28.5	20
JDA-RG-PG36	47	26~35	48	1~ 4	58	34.9	23.9

Product characteristics

- Mode of protection : IP67 acc. to EN 60529
- Temperature range : -40°C...+100°C
- Test standard : EMKO TUI(03-SEC) F1001/84
- Semko report : 410375
- Halogen-Free

JDA-SP-PG SCREW PLUG



BASE



Model and size

Article no.	A (mm)	B (mm)	D (mm)
JDA-SP-PG 7	8.5	12.5	15
JDA-SP-PG 9	8.5	13	19
JDA-SP-PG11	9	13	22
JDA-SP-PG13.5	9	13	25
JDA-SP-PG16	10.5	15	27
JDA-SP-PG21	8.5	13.5	33
JDA-SP-PG29	11.5	16	44
JDA-SP-PG36	13.5	18	55
JDA-SP-PG42	13.5	18.5	62
JDA-SP-PG48	14.5	19.5	68

Product characteristics

- Material : nylon plastic
- Protection degree : IP54
- Ambient temperature : -40°C to 100°C
- Supply color : Grey, Black

Note: Subject to change without any notice.

JDA-MSP-PG METAL SCREW PLUG



BASE



Model and size

Article no.	A (mm)	B (mm)	Wrench size (mm)
JDA-MSP-PG 7	5	8	14
JDA-MSP-PG 9	6	9	17
JDA-MSP-PG11	6	9	20
JDA-MSP-PG13.5	6.5	9.5	22
JDA-MSP-PG16	6.5	9.5	24
JDA-MSP-PG21	7	11	30
JDA-MSP-PG29	8	12	39
JDA-MSP-PG36	9	15	50
JDA-MSP-PG42	10	16	57
JDA-MSP-PG48	10	16	64

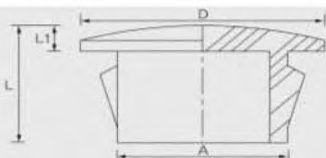
Product characteristics

- Material : Nickel-plated brass
- Protection degree : IP68

JDA-HP-PG HOLE PLUG



BASE



Model and size

Article no.	A	D	L1	L
	Aperture of the steel board	OD of the plug	Thickness	Total length
JDA-HP-PG 8	7.8	11.9	1.6	8
JDA-HP-PG10	9.5	13	1.6	10.5
JDA-HP-PG13	12.7	16.9	1.6	10.5
JDA-HP-PG16	15.9	19.8	1.6	10.5
JDA-HP-PG19	19	22.9	1.6	10.5
JDA-HP-PG22	22.2	24.9	1.6	11.5
JDA-HP-PG26	25.5	28.3	1.6	11.5
JDA-HP-PG30	30	34.2	1.6	11.5

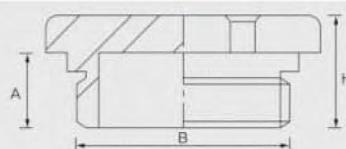
Product characteristics

- Material : PA66, 94-V2
- Color : Black(RAL 9005)
- Temperature Range : Min -40°C, Max 100°C
- Application : To cover the spare holes, by pushing the plug with your hand, you can finish the assembly easily without additional tools, suitable for the steel board below 3.2mm

JDA-DPM-P HEXAGON PLUG



BASE



Model and size

Article no.	Thread Dimension	A (mm)	B (mm)	Wrench size (mm)	H (mm)
JDA-DPM-P 7	PG 7	5	12.5	14	8
JDA-DPM-P 9	PG 9	6	15.2	17	9
JDA-DPM-P11	PG11	6	18.6	20	9
JDA-DPM-P13	PG13.5	7	20.4	22	10
JDA-DPM-P16	PG16	7	22.5	24	10
JDA-DPM-P21	PG21	7	28.3	30	11
JDA-DPM-P29	PG29	8	37	40	12
JDA-DPM-P36	PG36	9	47	50	15
JDA-DPM-P42	PG42	10	54	60	16
JDA-DPM-P48	PG48	10	59.3	65	16

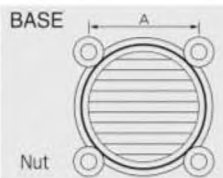
Product characteristics

- Material : Nickel-plated brass
- Protection degree : IP68

Note: Subject to change without any notice.

Accessories

JDA -V60, V80 VENT



Model and size			
Article no.	A	Processing Size	Ventilation Fan Size
JDA- V 60	50 ±0.3mm	63 ~ 65φ	60φ
JDA- V 80	71.5±0.3mm	88 ~ 90φ	80φ

Product characteristics

1. It is easy to exhaust heat of inside box to outside .
2. It is easy to install cooling pan inside the box.
3. It is designed to prevent the penetration of rain,

Draw latch

- Material : SUS304
- JDA-L75
- JDA-L65
- JDA-L55



JDA-L75 JDA-L65 JDA-L55

Wall mounting bracket

- Material : SUS 304
- JDA-B60
- JDA-B50
- JDA-B40



JDA-B60 JDA-B50 JDA-B40

Draw latch lock

- Material : SUS304
- Use only P-type



JDA-PSK50 JDA-PSK35 JDA-PSK20

JDA-DR-1100

- Material : ALUMINIUM



Hinge

- Material : SUS304
- JDA-H75
- JDA-H65
- JDA-H55



JDA-H75 JDA-H65 JDA-H55

Duct Ring

- Material : Steel(Zinc plating)



JDA-D30L JDA-D30S JDA-D25L JDA-D25S

Note: Subject to change without any notice.

Plastic lock

- Material : Nylon
- All hinge type products



JDA-PK

Lock

- Material : SUS304 etc.
- All hinge type products



JDA-SK

Key Ring

- Material : SUS 304
- All hinge series products



JDA-K40

Handle

- Material : ABS



Front Side



Back Side

Earth Stud

- Material : SUS304



Dual door

- Material : ABS
- Frame, support, hinge, handle



Dual door mounting plate

- Material : Aluminium
- Medium and large plastic Boxes



Plastic mounting plate

- Material : ABS
- All plastic box products



Steel mounting plate

- Material : Steel(Zink plating)
- All plastic box products



Note: Subject to change without any notice.