

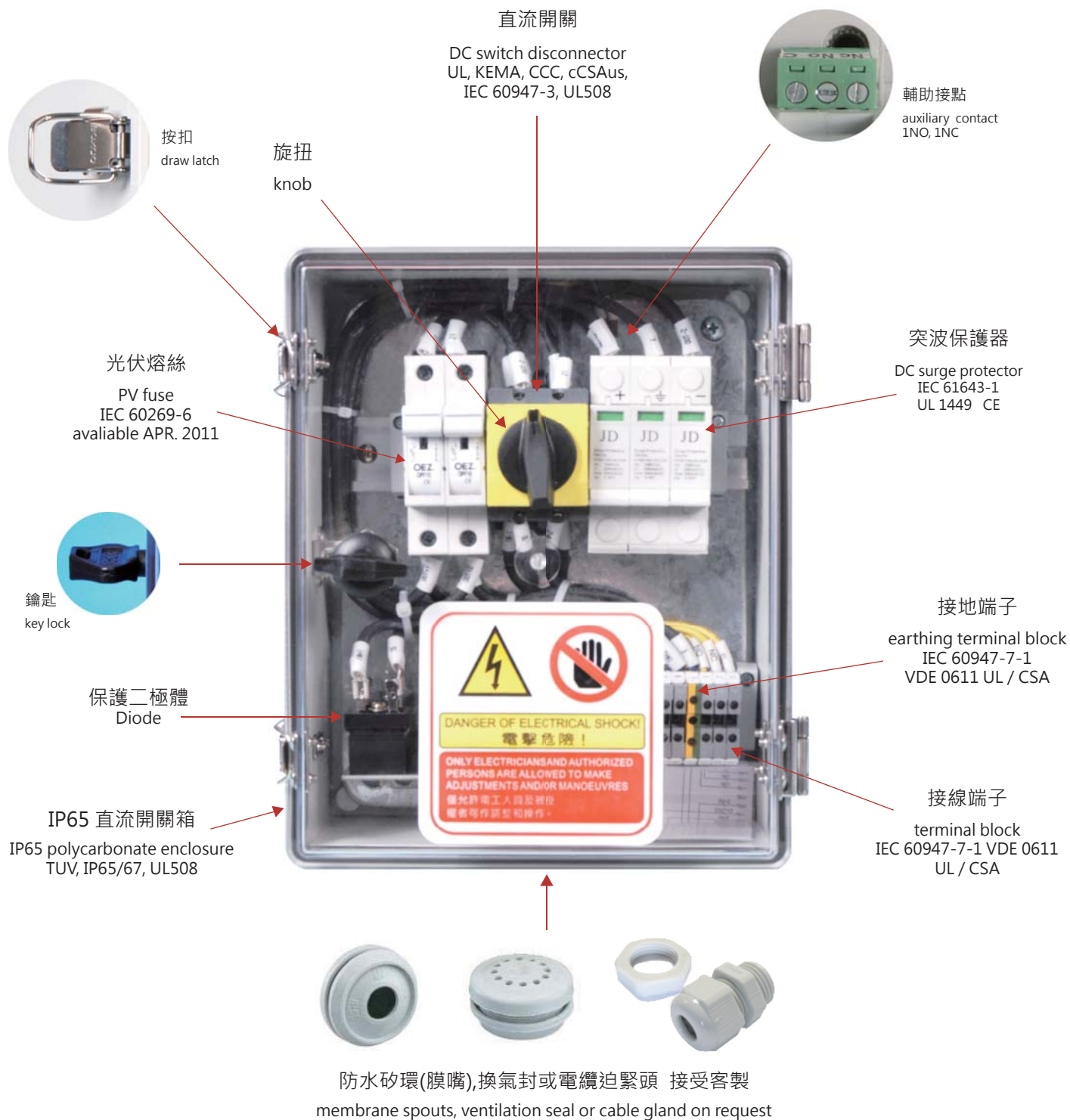
# PV array combiner box

PRODUCT BROCHURE





# description of system elements



Do you want to configure a specific number of strings ?  
Do you have a multistring inverter which requires more than 2 poles ?  
Do you want to include additional protection in the systems : fuse, diodes, for example ?  
Any specific requirement about cross section of the incoming or outgoing cable ?  
Any special connector, for example MC or Tyco ?  
Do you need string monitoring ?  
Do you need to operate the switch from remote, maybe from PLC, or external relay ?  
Do you want to switch off the system in case of an earth fault ?  
Any other requirement ?  
JD Auspice customizes your junction boxes according to your installation !

您想配置一個特定的組串迴路 ?  
您有一個多串逆變器需要超過2極 ?  
您要在系統提供額外的保護例如含：保險絲、二極體 ?  
任何有關的具體要求的輸出入電纜截面積 ?  
任何特殊的連接器，例如MC或Tyco ?  
您是否需要從遠程操作開關，從 PLC或外部繼電器 ?  
您是否想要在接地故障的情況下關閉系統 ?  
您是否想要串列即時監測 ?  
您還有任何其他的要求 ?  
日燭科技的直流開關箱根據您的設備訂製 !

Note: Subject to change without any notice.

直流匯流箱				
輸入數 Input string	1	2	3	on request
輸入線徑 Cross section of input cable	2.5 - 6mm <sup>2</sup>			-
輸出線徑 Cross section of output cable	DC Switch disconnecter: 2.5mm <sup>2</sup> - 6mm <sup>2</sup>			-
	SPD: single strand 35mm <sup>2</sup> , multi-strand 25mm <sup>2</sup>			
保護二極體 Diode	25, 35, 40A / 1200 Vdc, on request 1600 Vdc			40A / 1600 Vdc
保險絲 Fuse	10A / 900 Vdc / 1000 Vdc, on request			900 / 1000 Vdc
	Other fuse rating 1,2,4,6,8,12,16,20,25 on request			On request
突波保護器 Surge Protective device	600Vdc In 20KA, Im 40KA 8/20 μs, class II, on request 1000 Vdc			1000Vdc, In20 KA Im 40 KA class II
直流開關最大輸出電流 Max. output current of DC disconnect switch	2 / 4 / 6 P, 16 A other on request			Up to 1250 A
最大輸入電壓 Max. input voltage	600, 750, 850, 1000 Vdc			
箱體材質 Material of enclosure	ABS, PC, GRP on request			
防護等級 IP protection class	IP 65			
尺寸(mm) Dimension in mm	300 x 400 x 180	WxHxD, other on request		-
操作溫度 Max. oper. Temp. °C	SPD: -40~+80°C			
	DC switch disconnecter: -5 + 40°C on request: -25~+70°C			
儲存溫度 Max. Storage Temp. °C	SPD: -40~+80°C			
	DC switch disconnecter: -40~+80°C			
重量 Weight in kg				
認證 Certificate	DC switch cCSus, UL508, KEMA, CCC, enclosure: TUV Fuse: IEC60269-6			

pvBos® - 100V - 16B4E - F210 - S15ER - PV40/100 - C06 - STCG - ODCG

combiner box

Max. system voltage Vdc  
60: 600Vdc 75: 750Vdc  
85: 850Vdc 100: 1000Vdc

Rated current of DC Switch disconnecter  
Type of mounting  
B: bottom mount P: panel mount  
E: clockwise 90 deg. H: anti-clockwise 90 deg.  
4: Number of Pole of DC Switch, 4 means 2 string input

F: fuse 2: number of fuse  
Rated Fuse current A  
available 2, 4, 6, 8, 10, 12, 16, 20, 25  
Other on request

Surge Protective Device for PV  
IN: 20 KA Imax: 40KA  
Voltage: 600, 750, 1000 Vdc  
60: 600Vdc 75: 750Vdc  
85: 850Vdc 100: 1000Vdc

Outer diameter of DC main cable  
1121: cable gland 11~21 mm  
1523: cable gland 15~23 mm  
1928: cable gland 19~28 mm

ST: String Connection  
CG: Cable gland  
CN: Connector

Max. cross section of cable, e.g. 2.5, 4, 6mm

S: string Monitor  
15: number of string input  
E: temperature, wind speed, wind direction, irradiation  
R: relay module for SPD, switch status output



- 有載隔離、箱體具防水、防塵IP65等級、蓋板採透明或非透明、門鎖及旋鈕鎖選項。
- On Load disconnect, weatherproof IP65, transparent or opaque cover door Lock or lockable knob available on request.

Note: Subject to change without any notice.



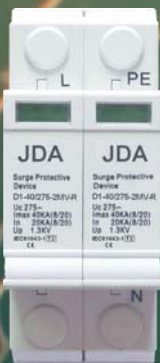
## Power Supply System

### Class II (C) Surge Protective Device for LV Power System

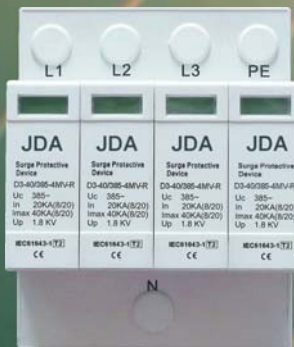
IEC61643-1 ; UL14493<sup>rd</sup> ; CE

- Fail Safe System
- Uc: ac:75~690V
- I<sub>max</sub> 20~200KA(8/20μS)
- Fault indication
- With remote signaling contact optional

Rapid thermal disconnection under TOV ;  
Inbuilt Arc - extinguishing device.



D1-40/275-2MV-R



D3-40/400-4MV-R



D3-150/385-4MV-R

## Photovoltaic

### DC Surge Protective Devices for Photovoltaic protection (PV Industry)

IEC61643-1 ; UL14493<sup>rd</sup> ; CE

- Common mode or Common mode+Differential mode protection
- Un: dc:500V~1000V
- I<sub>max</sub> 20~80KA(8/20μS)
- Class I(B) and Class II (C) available
- Fault indication
- With remote signaling contact optional
- Conform to UL1449 3<sup>rd</sup> with SCCR 200KA Arms

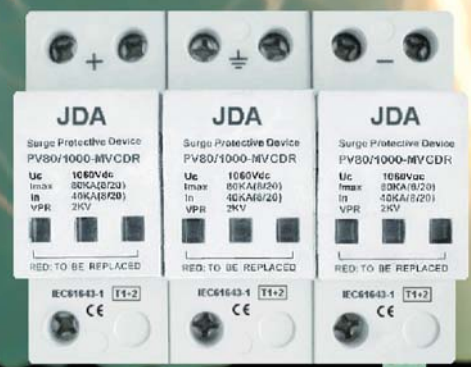
Rapid thermal disconnection under TOV ;  
Inbuilt Arc - extinguishing device.



PV40/600-MVCR



PV40/1000-MVCDR



PV80/1000-MVCDR

## Multi-Air-Gap series

Class I (B) arrester in according with IEC61643-1:2005

IEC61643-1 ; UL14493<sup>rd</sup> ; CE

- Tested with lightning impulse current (10/350) in according with IEC61643- 1:2005
- Multi-Air-Gap technology, no leakage current and follow current
- Maximum energy capability
- Low voltage protection level
- Fast response
- With remote signaling contact optional
- Single pole version permits the installation in up to four poles depending on the type of power system



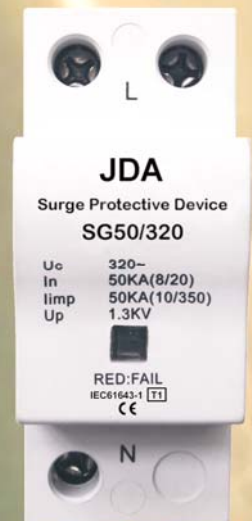
SG15/255

## Spark gap series

Class I Surge Protective Devices for LV Power System

IEC61643-1 ; UL14493<sup>rd</sup> ; CE

- Spark gap technology
- Iimp 25~100KA (10/350μs)
- Imax up to 200KA(8/20μs)
- Low voltage protection level (Up)
- Fault indication optional
- With remote signaling contact optional
- Non-pluggable type design to avoid flashover happen at the contacts between pluggable module and base under high surge current



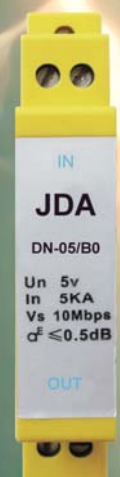
SG50/320

## Data Network protector

Surge protection for Network Signaling and Data Line

IEC61643-1

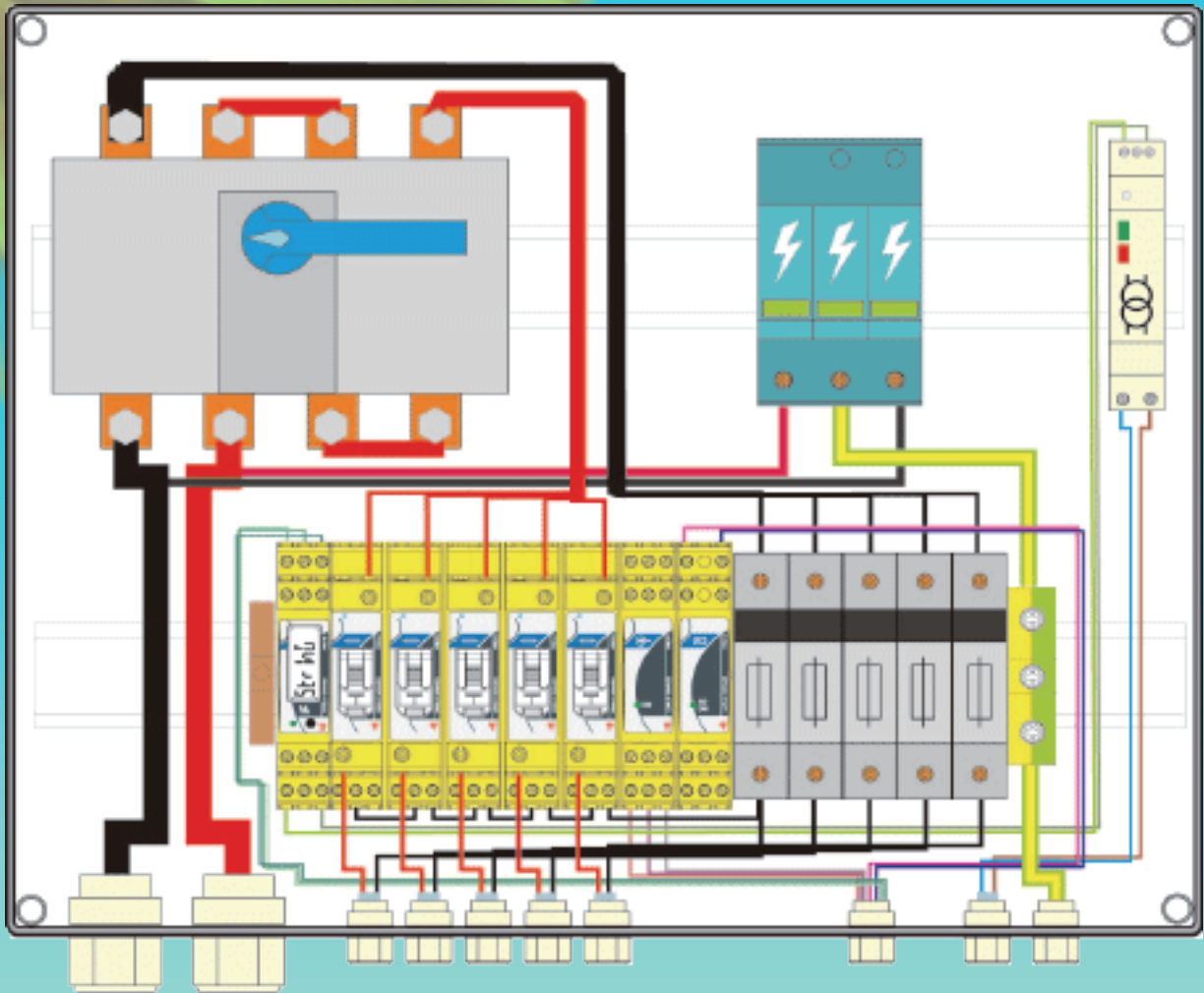
- Signal transmission is not interrupted when exchanging module
- Two-stage protection circuit
- 35 mm DIN-rail mounting design



DN-24/B0



# stringMoni<sup>®</sup> arrayMoni<sup>®</sup>



日煬科技有限公司  
JD Auspice Co., Ltd

Tel: +886-2-2595-9780 Fax: +886-2-2595-9412  
www.jdauspice.com service@jdauspice.com  
2F-5, No.7, Lane 43, Shaungcheng St., Zhongshan District,  
Taipei City, 10461, Taiwan, R.O.C.  
10461 台北市中山區雙城街43巷7號2樓之5