

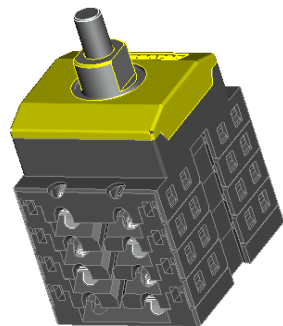
# THE NEW SANTON X-TYPE SWITCH

## TECHNICAL SPECIFICATIONS AND INSTRUCTIONS FOR USE

SANTON X-TYPE SWITCH: X60.25PKS2E-(A)



Switch disconnecter for solar application according to UL 508, CSA C22.2 No. 0 – M91, -

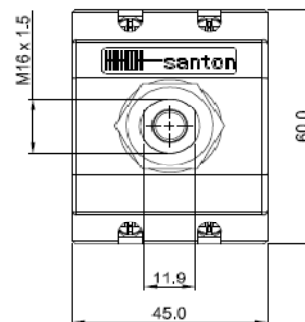


Contact scheme		Positions			
Marking	Symbol	Marking	1	2	3 4
12	— / —				
11	— / —				
10	— / —				
9	— / —				
8	— / —				
7	— / —				
6	— / —				
5	— / —				
4	— / —	2	X		
3	— / —	2	X		
2	— / —	1	X		
1	— / —	1	X		

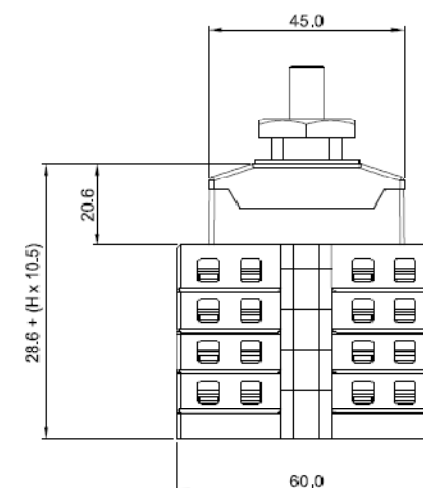
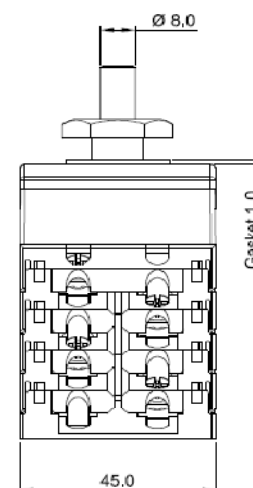
Contacts are made in "X" marked position.

Symbols for connections between contacts: [ ]

Technical data	Symbol	X60.25PKS2E-(A)	Unit
nominal voltage	U	600	V
nominal current	I	25	A
method of mounting		single hole mounting IP65 [P]	
number of poles		DC single pole switching	2
utilization category		Photovoltaic disconnect switch	
actuator		without a knob, suitable for standard black knob	
method of operation		independent manual operation	
positions		OFF at 12 hr, ON at 3 hr [E]	
rated impulse withstand voltage		8	kV
insulation voltage		600	V
rated thermal current uninterrupted duty		25	A
rated short-time withstand current (1s)		750	A
suitable for use on a circuit capable of delivery not more than 5.000 rms symmetrical Amperes, 600 Vdc max, when protected by class H fuses:			
		40	A max.
max power dissipation		4.0	W
minimum required dimensions of enclosures l x w x h*		124 x 47 x 70	mm
* see the drawing for the height of the switch. The number of layers is	H	4	
terminal screws M4 need a tightening torque, min. - max.			
		1.5	1.7 Nm
		13	15 Lb.In
wire size, "Copper Wire Only", minimum required fine wire cross-section			
		4	mm <sup>2</sup>
		10	AWG
tightening torque panel mounting nut, min. - max.			
		2	2.5 Nm
		18	22 Lb.In
ambient temperature allowed between		- 5 and + 40	°C
storage temperature allowed between		- 40 and + 80	°C
maximum relative humidity, without condensation at 20 °C		90	%
watertight gland, class			
nominal voltage AC	U	0	V AC
nominal current AC	I	0	A AC
number of poles AC		0	
auxiliary contact, nominal current 16A at 250 V, AC15		No auxiliary contact	
weight		221	g
accessoires:		0	



H is the number of layers in the switch



### Mounting instructions

In the application all ratings have to be respected. When building the switch in an enclosure, the space envelope must be respected. The terminals can take flexible wires up to 6 mm<sup>2</sup> and with fork shoes for wires up to 10 mm<sup>2</sup> (type 3547C from Vogt) After mounting the wiring must be checked and the switch must operate smoothly.

### Maintenance

The X type switches are designed for a very long life but they need some simple yearly maintenance.

- Check the installation for signs of overload or overheating. The terminals may not exceed the limit of 85°C under full load.
- By operating the switch a few times (5x) the contacts will clean themselves and the switch will have a longer life.

Dimensions, specifications and data shown could be subject to change without notice.