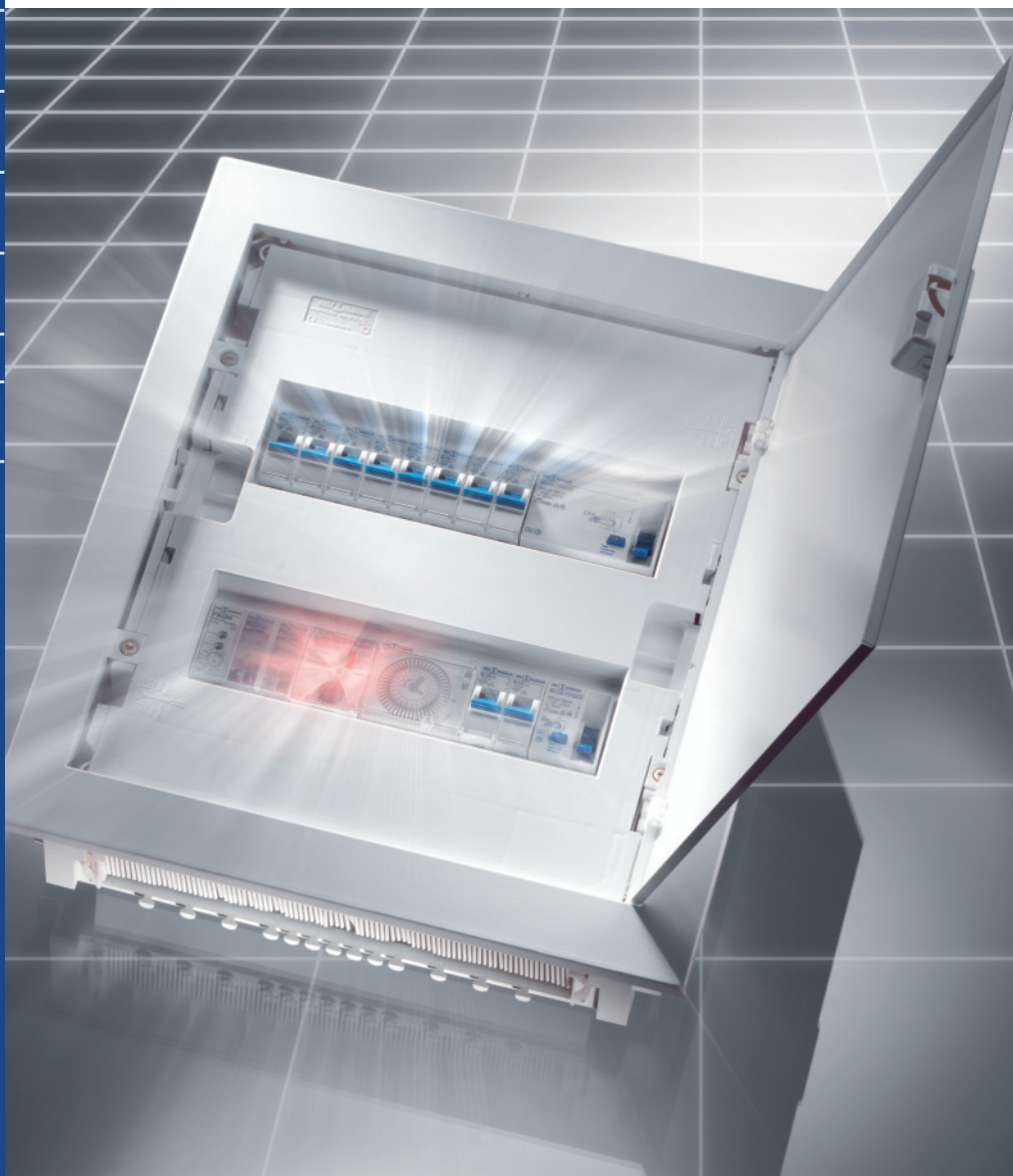


Description	
Distribution Boards	Page 58
Flush mounted	
Distribution Boards	Page 60
Hollow-Wall	
Distribution Boards	Page 60
Surface mounted	
Distribution Boards	Page 61
Accessories	Page 62
Special	
Distribution Boards	Page 63



Distribution Boards

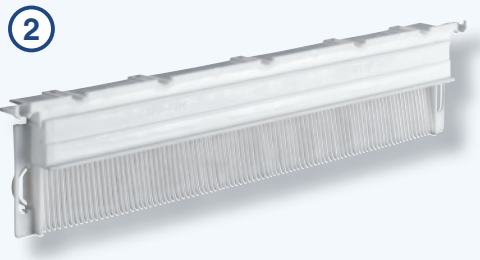
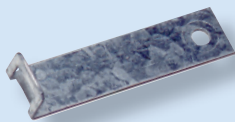
JD Auspice Co.,Ltd.
 Tel: 02-2595-9780
 Fax: 02-2595-9412
 Mail: jd.auspice@msa.hinet.net
 Web: <http://www.jdauspice.com>



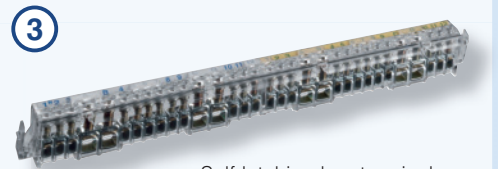
Large wiring spaces, easy installation and stability are the key features of our flush-mounting and hollow-wall distribution board range.



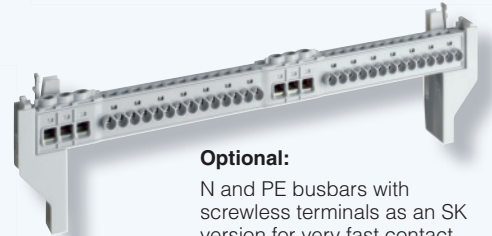
Moulded wall anchors and an all-round nail strip hold the wall box safely in place (rear view with wall anchor installed).



Patented self-latching sliding section with automatically retractable comb pins. No need to break or cut out cable glands; wiring can be easily installed.



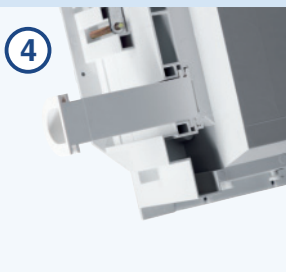
Self-latching box terminal strip for wire connection up to 25 mm² (in) and 10 mm² (out). Finger safe according to BGV A2 (VBG 4). Screws are open for shipping and cannot be lost.



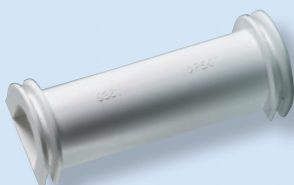
Optional:

N and PE busbars with screwless terminals as an SK version for very fast contact.

- incoming terminals: up to 16 mm² box terminal.
 - outgoing terminals: screwless up to 4 mm².
- Finger safe according to BGV A2 (VBG 4). Snap-on mounting or optional screw-type mounting of the adapter.



Ready-formed connections for sleeves at top and bottom (rear view with sleeve installed). Also suitable for cross wiring.



Double wall for good stability.

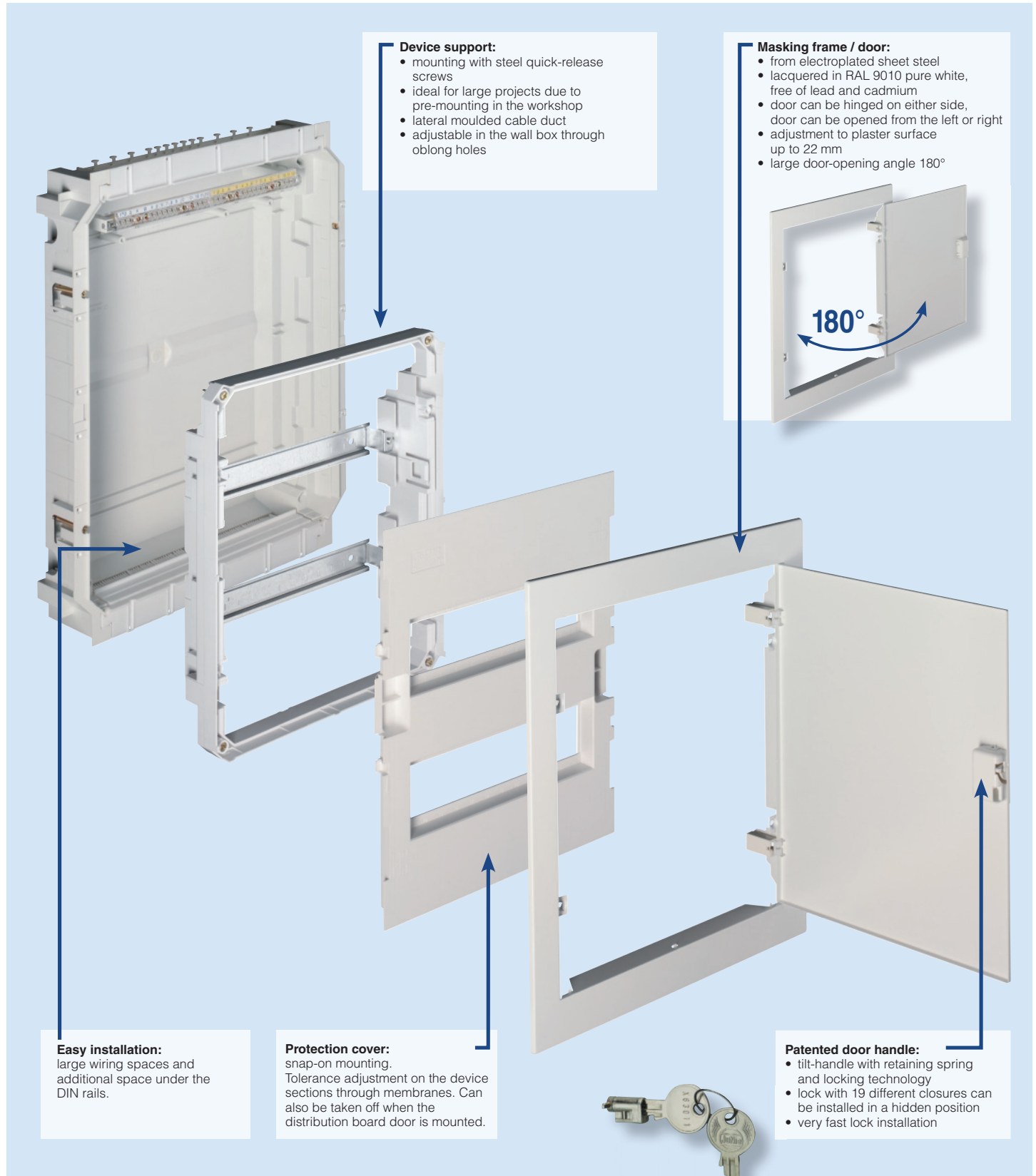


plug  **power**



Additional neutral terminal or additional PE terminal available as an accessory.

You will always find what you need with ABL SURSUM's distribution board range.
Quality products from professionals for professionals!

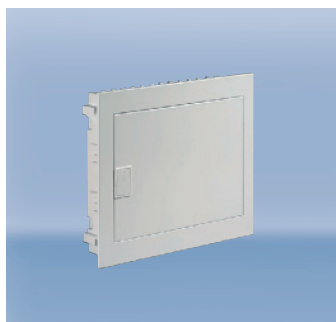


Note:
all article numbers with
ending in SK have terminal
blocks with screwless
terminals

Flush mounted Distribution Boards



according to DIN 43871, DIN VDE 0603 and EN 60439
for installing 68 mm installation devices, I_n 63 A, IP 30



Flush mounted distribution boards

1 row
with N and PE terminals
Recess dimensions:
333 x 290 x 92 mm

Colour	Article no.	Weight g/each	Pack. unit
white	UV12	2100	1
white	UV12SK	2100	1



Flush mounted distribution boards

2 rows
with N and PE terminals
Recess dimensions:
333 x 415 x 92 mm

Colour	Article no.	Weight g/each	Pack. unit
white	UV24	2900	1
white	UV24SK	2900	1



Flush mounted distribution boards

3 rows
with N and PE terminals
Recess dimensions:
333 x 560 x 92 mm

Colour	Article no.	Weight g/each	Pack. unit
white	UV36	3800	1
white	UV36SK	3800	1



Flush mounted distribution boards

4 rows
with N and PE terminals
Recess dimensions:
333 x 685 x 92 mm

Colour	Article no.	Weight g/each	Pack. unit
white	UV48	4600	1
white	UV48SK	4600	1

Note:
all article numbers with
ending in SK have terminal
blocks with screwless
terminals

Hollow-Wall Distribution Boards



according to DIN 43871, DIN VDE 0603 and EN 60439
for installing 68 mm installation devices, I_n 63 A, IP 30



Hollow-wall distribution boards

1 row
with N and PE terminals
Wall section:
333+1,5 x 290+1,5 x 92 mm

Colour	Article no.	Weight g/each	Pack. unit
white	HV12	2200	1
white	HV12SK	2200	1



Hollow-wall distribution boards

2 rows
with N and PE terminals
Wall section:
333+1,5 x 415+1,5 x 92 mm

Colour	Article no.	Weight g/each	Pack. unit
white	HV24	3000	1
white	HV24SK	3000	1



Hollow-wall distribution boards

3 rows
with N and PE terminals
Wall section:
333+1,5 x 560+1,5 x 92 mm

Colour	Article no.	Weight g/each	Pack. unit
white	HV36	3900	1
white	HV36SK	3900	1



Hollow-wall distribution boards

4 rows
with N and PE terminals
Wall section:
333+1,5 x 685+1,5 x 92 mm

Colour	Article no.	Weight g/each	Pack. unit
white	HV48	4700	1
white	HV48SK	4700	1

according to DIN 43871, DIN VDE 0603 and EN 60439
for installing 68 mm installation devices, I_n 63 A, IP 30

Surface mounted distribution boards

The totally insulated thermoplastic distribution board range in the colour RAL 9010 covers 1 to 4-row distribution boards for the installation of 68 mm installation devices.

The device support is closed at the back and enables wiring access not only from all sides but also by breaking open the rear panel from behind. The cover is mounted on the device support with quick-release screws.



Surface mounted distribution boards

1 row
with N and PE terminals
Dimensions: 275 x 221 x 74 mm

Colour	Article no.	Weight g/each	Pack. unit
white	AV12	732	1



Surface mounted distribution boards

2 rows
with N and PE terminals
Dimensions: 275 x 346 x 74 mm

Colour	Article no.	Weight g/each	Pack. unit
white	AV24	1038	1



Surface mounted distribution boards

3 rows
with N and PE terminals
Dimensions: 275 x 491 x 74 mm

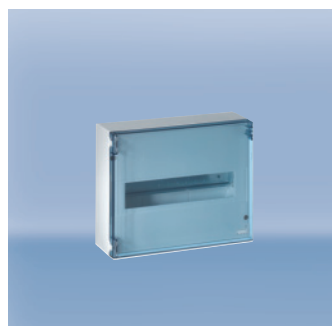
Colour	Article no.	Weight g/each	Pack. unit
white	AV36	1385	1



Surface mounted distribution boards

4 rows
with N and PE terminals
Dimensions: 275 x 616 x 74 mm

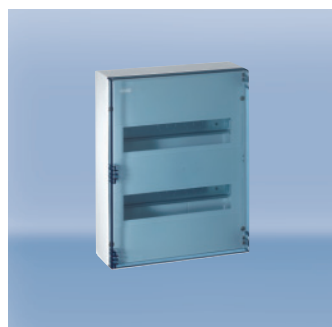
Colour	Article no.	Weight g/each	Pack. unit
white	AV48	1778	1



Surface mounted distribution boards with doors

1 row
with N and PE terminals
Dimensions: 275 x 221 x 103 mm

Colour	Article no.	Weight g/each	Pack. unit
blue	AV12TB	962	1
white	AV12T	962	1



Surface mounted distribution boards with doors

2 rows
with N and PE terminals
Dimensions: 275 x 346 x 103 mm

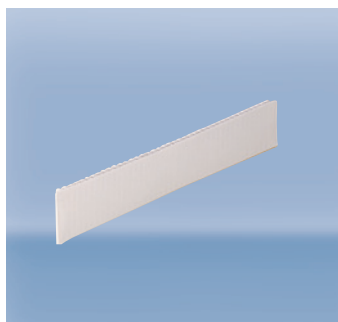
Colour	Article no.	Weight g/each	Pack. unit
blue	AV24TB	1378	1
white	AV24T	1378	1



Surface mounted distribution boards with doors

3 rows
with N and PE terminals
Dimensions: 275 x 491 x 103 mm

Colour	Article no.	Weight g/each	Pack. unit
blue	AV36TB	1905	1
white	AV36T	1905	1



Blank masking strip

14 modules

Colour	Article no.	Weight g/each	Pack. unit
grey	0380260	42	100
white	0380410	42	100



Additional neutral terminal

Terminal positions:
3 x 4 / 1 x 25 mm²

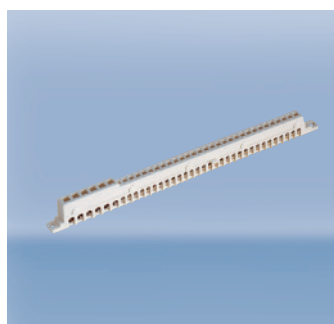
	Article no.	Weight g/each	Pack. unit
	4576000	29	1



Door lock

For flush mounted and hollow-wall distribution boards
19 different closures possible

	Article no.	Weight g/each	Pack. unit
	4577000	18	1



Additional PE terminal block

Terminal positions:
30 x 4 / 6 x 16 mm²

	Article no.	Weight g/each	Pack. unit
	6224000	190	1



Connecting sleeve

For the horizontal connection of flush mounted and hollow-wall distribution boards
1 set (2 pieces)

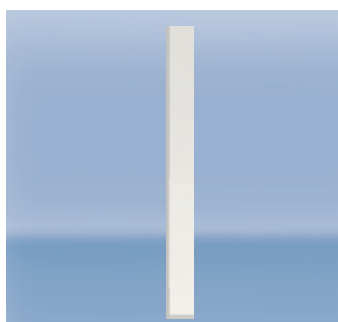
	Article no.	Weight g/each	Pack. unit
	4584000	32	1



Wall anchor

For additional anchoring of the wall box
1 set (4 pieces)

	Article no.	Weight g/each	Pack. unit
	4100000	28	1



Partition

3 rows vertical 4381000
4 rows vertical 4382000
3 and 4 rows horizontal 4383000
for flush mounted, surface mounted and hollow-wall distribution boards

	Article no.	Weight g/each	Pack. unit
	4381000	44	1
	4382000	55	1
	4383000	32	1



Door key kit

For installation in surface mounted distribution boards
0059510
Replacement key
0059100

	Article no.	Weight g/each	Pack. unit
	0059510	16	1
	0059100	16	1



Complete door for surface mounted distribution boards

1 row TAV1 / TAV1B
2 rows TAV2 / TAV2B
3 rows TAV3 / TAV3B

Colour	Article no.	Weight g/each	Pack. unit
blue	TAV1B	230	1
	TAV2B	340	1
	TAV3B	520	1
white	TAV1	230	1
	TAV2	340	1
	TAV3	520	1



Transparent window for surface mounted distribution boards

T1 – with frame to be snapped into the device section


TP1 – with frame to be snapped into the device section, sealable

Colour	Article no.	Weight g/each	Pack. unit
white	T1	127	1
white	TP1	132	1

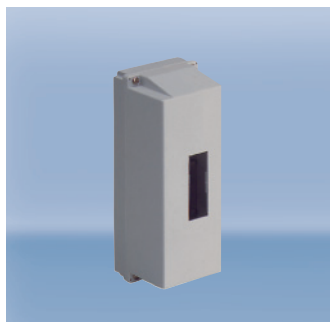


Flush mounted distribution boards

for 6 modules

Totally insulated 
Recess dimensions:
150 x 150 x 80 mm

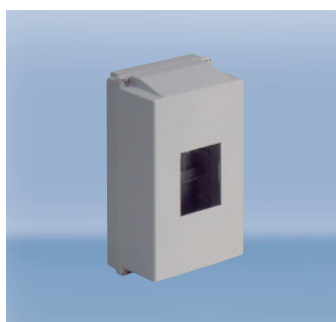
Colour	Article no.	Weight g/each	Pack. unit
grey	0141061	368	1/10



Surface mounted enclosure

for 2 modules
Dimensions: 46 x 145 x 58,5 mm

Colour	Article no.	Weight g/each	Pack. unit
grey	IKV.2	87	10



Surface mounted enclosure

for 4 modules
without terminals
Dimensions: 82 x 145 x 58,5 mm

Colour	Article no.	Weight g/each	Pack. unit
grey	IKV.4	110	5



Surface mounted enclosure

for 3 modules
with N and PE terminals
Dimensions: 82 x 145 x 58,5 mm

Colour	Article no.	Weight g/each	Pack. unit
grey	IKV.4N1	110	5



Surface mounted enclosure

for 10 modules
without terminals
Dimensions: 200 x 145 x 58,5 mm

Colour	Article no.	Weight g/each	Pack. unit
grey	IKV10	300	2



Surface mounted enclosure

for 10 modules
with N and PE terminals
Dimensions: 200 x 145 x 58,5 mm

Colour	Article no.	Weight g/each	Pack. unit
grey	IKV10N1	300	2



Housing

Splash-proof IP 44
with DIN rail
for 5 modules
Dimensions: 118 x 170 x 131 mm

Colour	Article no.	Weight g/each	Pack. unit
grey	B 40.01	510	1