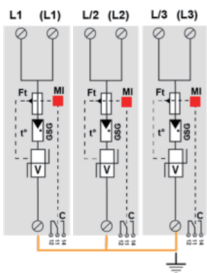
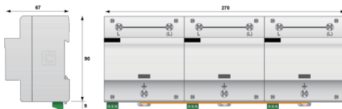




Type 1+2 AC surge protector - 1-pole

# DS253VG-1000

- Type 1+2 surge protector
- In : 30 kA
- Iimp : 25 kA
- Low voltage Up
- Internal disconnection, status indicator
- Remote signaling
- IEC 61643-11, EN 61643-11 and UL1449 ed4 compliance



- V: High-energy varistor
- GSG: Specific gas tube
- Ft: Thermal fuse
- C: Remote signaling contact
- t°: Thermal disconnection system
- MI: Disconnection indicator

Electrical Characteristics	
SPD type	1+2+3
Network	1000 V 3-phase
AC system	TNC-IT
Nominal line voltage	Un 900 V
Max. AC operating voltage	Uc 1000 Vac
Max. load current @25°C	IL 100 A
Temporary Over Voltage (TOV) Characteristics - 5 sec. Without disconnection	UT 1320 Vac withstand
Temporary Over Voltage (TOV) Characteristics - 120 mn Without disconnection or with safety disconnection	UT 1732 Vac withstand
Residual Current Leakage current to Ground	Ipe None
Follow current	If None
Nominal discharge current 15 x 8/20 μs impulses	In 30 kA
Max. discharge current max. withstand @ 8/20 μs by pole	Imax 60 kA
Total Maximum discharge current max. total withstand @ 8/20 μs	Imax Total 180 kA
Impulse current by pole max. withstand 10/350μs by pole	Iimp 25 kA
Total lightning current max. total withstand @ 10/350μs	Itotal 75 kA
Withstand on Combination waveform IEC 61643-11 Class III test: 1.2/50μs - 8/20μs	Uoc 6 kV
Specific energy by pole max. withstand 10/350 μs	W/R 156 kJ/ohm
Protection level @ In (8/20μs)	Up 4.0 kV
Residual voltage at 5 kA @ 5 kA (8/20μs)	Up-5kA 2.6 kV
Admissible short-circuit current	Iscrr 50 000 A
Mechanical Characteristics	
Technology	VG Technology (MOV+GSG)
SPD configuration	3-phase
Connection to Network	By screw: 6-35mm <sup>2</sup> (50mm <sup>2</sup> flexible)
Format	1-pole modular box assembled
Mounting	Symmetrical rail 35 mm (EN 60715)
Housing material	Thermoplastic UL94 V-0
Operating temperature	Tu -40/+85°C
Protection rating	IP20
Failsafe mode	Disconnection from AC network
Disconnection indicator	1 mechanical indicator by pole
Remote signaling of disconnection	Output on changeover contact
Dimensions	See diagram - 15 TE, DIN 43880
Weight	2 kg
Disconnectors	
Thermal disconnector	Internal
Installation ground fault breaker	Type 'S' or delayed
Back-up protection device	Fuse assembly: SFD1-25-30S / or Fuses Type gG 315 A
Standards	
Standards compliance	IEC 61643-11 / EN 61643-11 / UL1449 ed.5
Certification	
Part number	395701

note: subject to change without any notice, JDA pay no responsibility